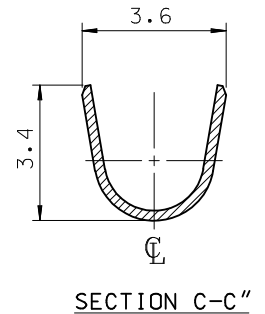
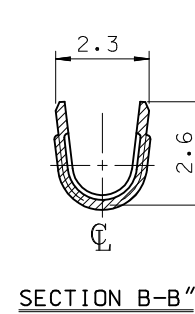
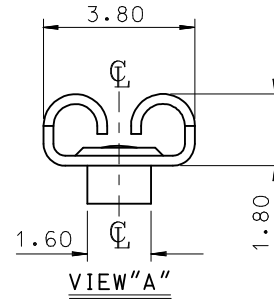
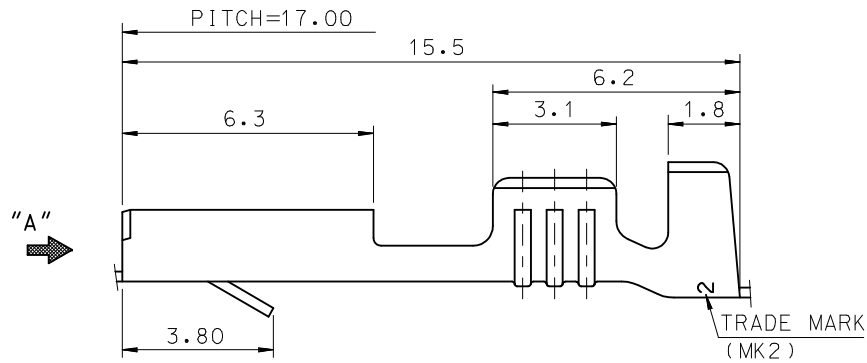


NOTES.

1. MATERIAL : BRASS
2. FINISHES : SEE TABLE
0.8~1.8 μm TIN PLATING
OVERALL 0.3~0.8μm COPPER PLATING
3. PRODUCT SPECIFICATION : PS-35711-001, PS-35112-001
4. MATES WITH : SEE TABLE
5. APPLICABLE WIRE RANGE : AWG #22~#20

MATERIAL NO.	ENG NO.	FINISH	MATING TAB
357110600	35711-0600	UNPLATED	0.5 mm
357110610	35711-0610	ⓄPRE-TIN PLATED	
357110601	35711-0601	UNPLATED	0.45 mm
357110611	35711-0611	ⓄPRE-TIN PLATED	



REVISED EC NO: KOR2009-0111 DRWN: JHPARK01 2009/01/30 CHKD: W. YANG 2009/01/30 APPR: YUNSIKKIM 2009/01/30	DESCRIPTION REV	QUALITY SYMBOLS ▽=0 ▽=0	GENERAL TOLERANCES (UNLESS SPECIFIED)		DIMENSION STYLE MM ONLY		SCALE 8:1	DESIGN UNITS METRIC	THIRD ANGLE PROJECTION
		4 PLACES ± --- ± --- 3 PLACES ± --- ± --- 2 PLACES ± --- ± --- 1 PLACE ± 0.30 ± ---	mm INCH ± --- ± --- ± --- ± --- ± --- ± --- ± 0.30 ± ---	DRAWN BY WY. YANG	DATE 1993/04/15	TITLE .110 SLIP-IN RECEPTACLE			
		ANGULAR ± ---°		CHECKED BY BK. CHOI	DATE 1993/04/15	MOLEX INCORPORATED			
		DRAFT WHERE APPLICABLE MUST REMAIN WITHIN DIMENSIONS		APPROVED BY CW. LEE	DATE 1993/04/15	DOCUMENT NO. SD-35711-060	SHEET NO. 1 OF 01		
		MATERIAL NO. SEE TABLE		THIS DRAWING CONTAINS INFORMATION THAT IS PROPRIETARY TO MOLEX INCORPORATED AND SHOULD NOT BE USED WITHOUT WRITTEN PERMISSION					