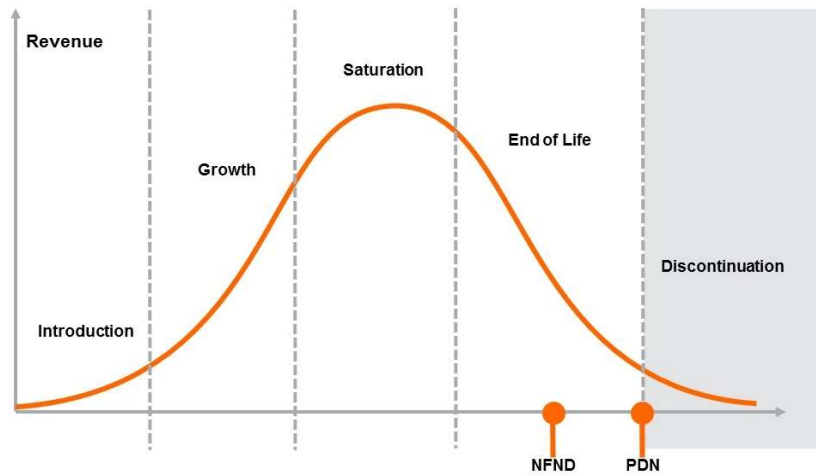


Product Or Individual Q-Code Discontinuation (acc. JEDEC J-STD-048)  
OS-PDN-2022-054

15 June 2022

Last order: 15 December 2022  
Last delivery: 15 June 2023



Please direct your feedback to your local Sales office.

DISCONTINUED				NEW (REPLACEMENT)		
Device	Ordering Code	Brand	Reason for discontinuation	Device	Datasheet Ordering Code	Brand
LR T67F-V1V2-D2-3A4B-20-R18-Z-XX	Q65112A7352	TOPLED	No sufficient future volume forecast	LR T67F-U1AA-1-1-20-R18-Z	Q65110A9232	TOPLED
LG T67K-H2K1-24-0-2-R33-ZQ	Q65110A3288	TOPLED	Special clearance	LG T67K-H2K1-24-0-2-R18-Z	Q65110A2183	TOPLED
LG T67K-J1K1-23-0-2-R33-ZQ	Q65111A0988	TOPLED	Special clearance	LG T67K-H2K1-24-0-2-R18-Z	Q65110A2183	TOPLED
LG T67K-J1K1-23-0-2-R33-ZQ	Q65111A0988	TOPLED	Special clearance	LG T67K-J1K1-23-0-2-R33-SIE	Q65113A3788	TOPLED
LW VH8G-Q2R2-4M6N-1-5-R18-Z-XX	Q65111A0152	FIREFLY	Brightness increase – dim selections need to be phased-out	LW VH8G-Q2OO-4M6N-1-5-R18-Z	Q65110A8090	FIREFLY
LW Q38E-R2S2-5K5L-3X4X-5-R18-XX	Q65113A0348	Chip LED	No sufficient future volume forecast	LW Q38E-Q1OO-3K6L-1-5-R18	Q65110A7210	Chip LED
LW Q38E-R2S2-4K4L-3X4X-5-R18-XX	Q65113A0347	Chip LED	No sufficient future volume forecast	LW Q38E-Q1OO-3K6L-1-5-R18	Q65110A7210	Chip LED