

HB-2X2-RW

~50° wide beam

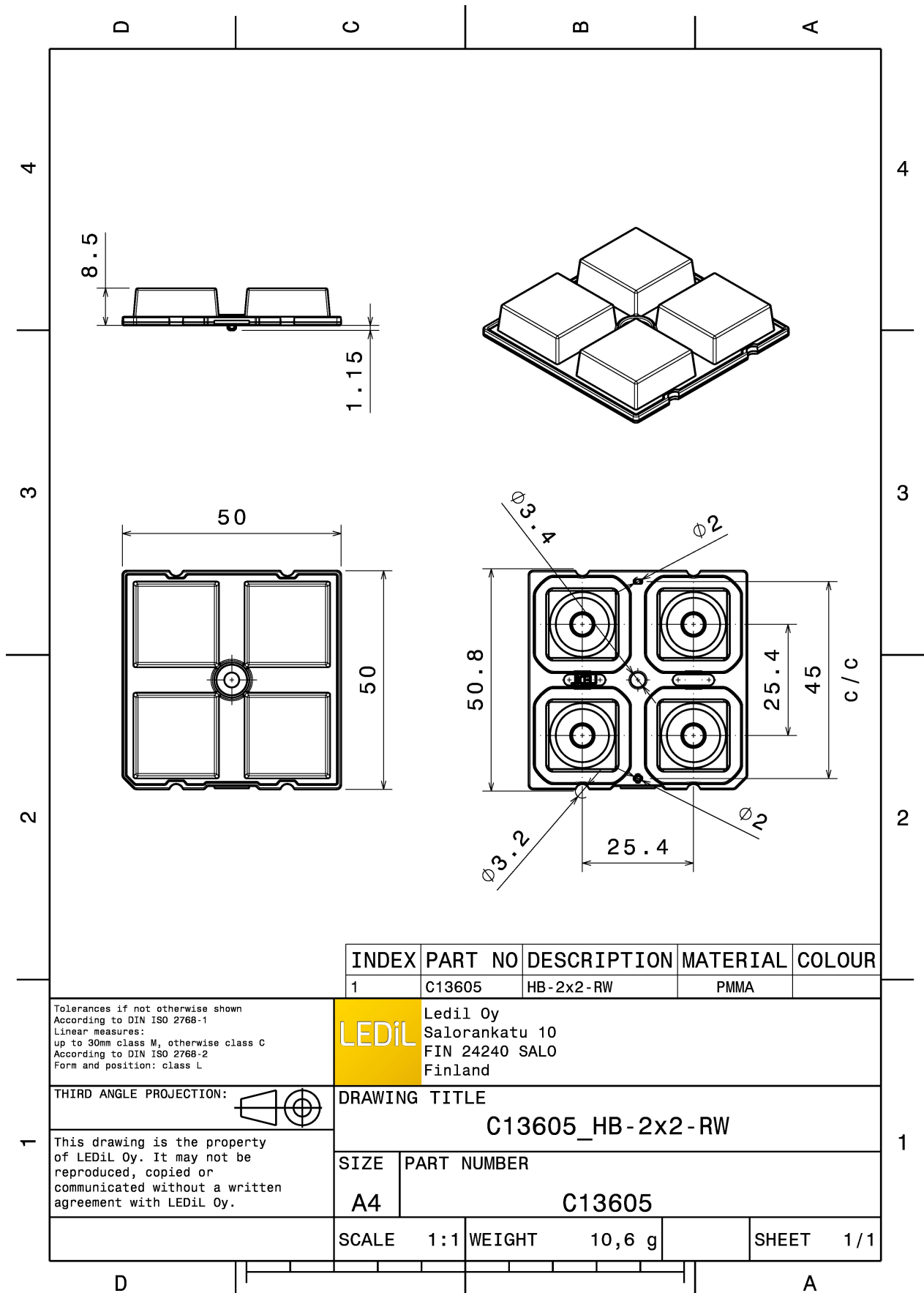
TECHNICAL SPECIFICATIONS:

| | |
|-----------------|--------------------|
| Dimensions | 50.0 mm |
| Height | 8.5 mm |
| Fastening | glue, screw, pin |
| Colour | clear |
| Box size | 480 x 280 x 300 mm |
| Box weight | 9.3 kg |
| Quantity in Box | 800 pcs |
| ROHS compliant | yes ⓘ |



MATERIAL SPECIFICATIONS:

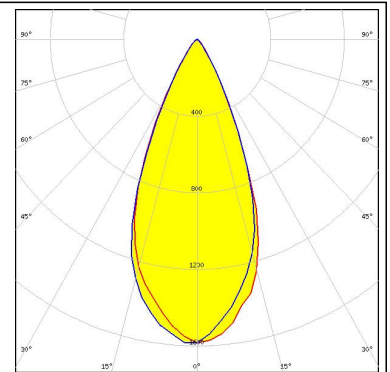
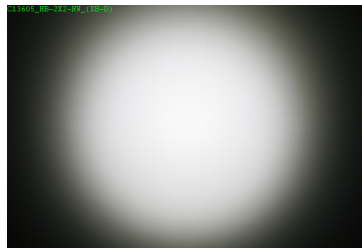
| Component | Type | Material | Colour |
|-----------|------------|----------|--------|
| HB-2X2-RW | Multi-lens | PMMA | clear |



PHOTOMETRIC DATA (MEASURED):

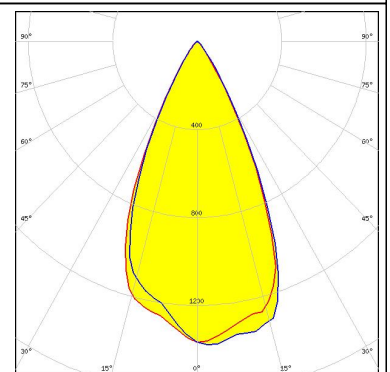
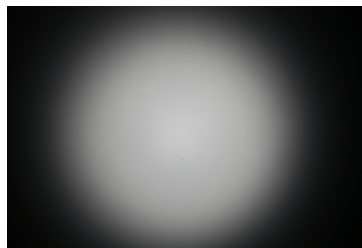
CREE

LED XB-D
 FWHM 46.0°
 Efficiency 88 %
 Peak intensity 1.600 cd/lm
 LEDs/each optic 1
 Light colour White
 Required components:



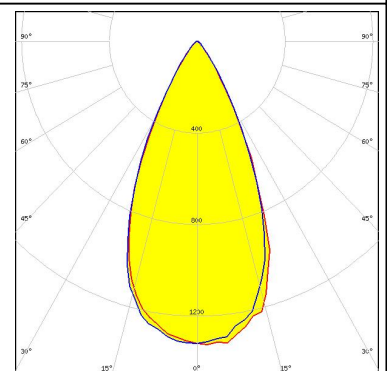
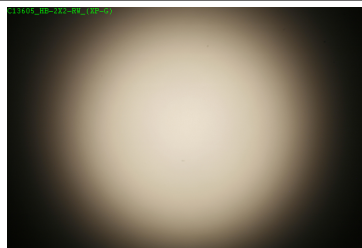
CREE

LED XP-E
 FWHM 51.0°
 Efficiency 89 %
 Peak intensity 1.400 cd/lm
 LEDs/each optic 1
 Light colour White
 Required components:



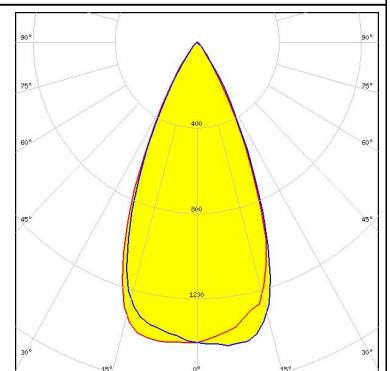
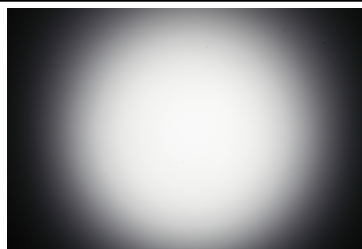
CREE

LED XP-G
 FWHM 50.0°
 Efficiency 89 %
 Peak intensity 1.300 cd/lm
 LEDs/each optic 1
 Light colour White
 Required components:



CREE

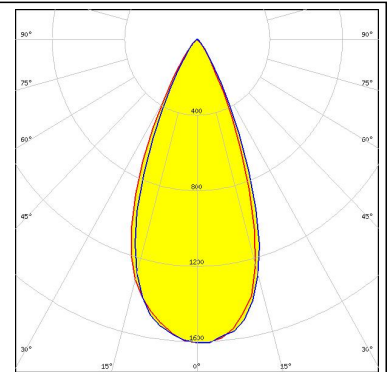
LED XP-G2
 FWHM 48.0°
 Efficiency 91 %
 Peak intensity 1.400 cd/lm
 LEDs/each optic 1
 Light colour White
 Required components:



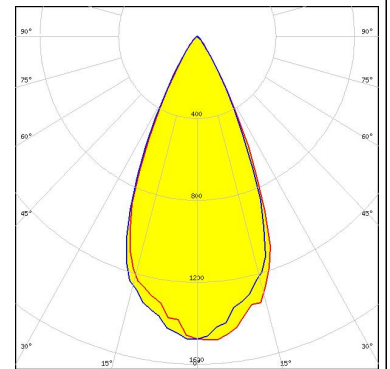
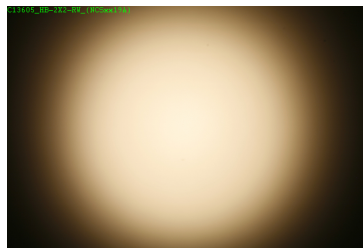
PHOTOMETRIC DATA (MEASURED):



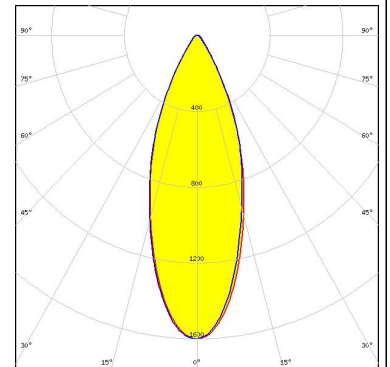
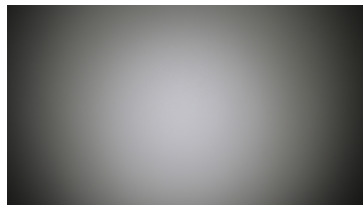
LED XT-E
 FWHM 44.0°
 Efficiency 91 %
 Peak intensity 1.600 cd/lm
 LEDs/each optic 1
 Light colour White
 Required components:



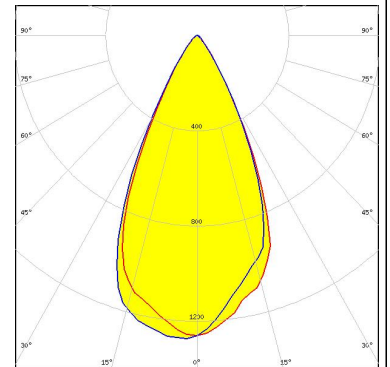
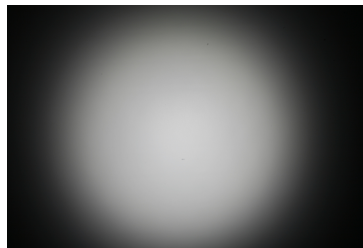
LED NCSxx19A
 FWHM 49.0°
 Efficiency 90 %
 Peak intensity 1.500 cd/lm
 LEDs/each optic 1
 Light colour White
 Required components:



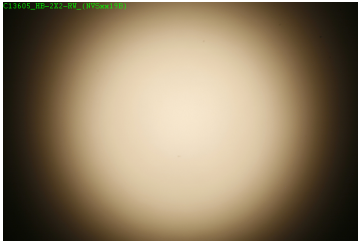
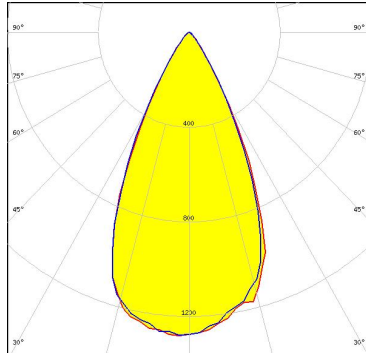
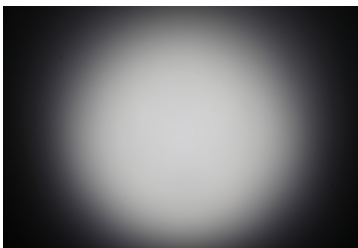
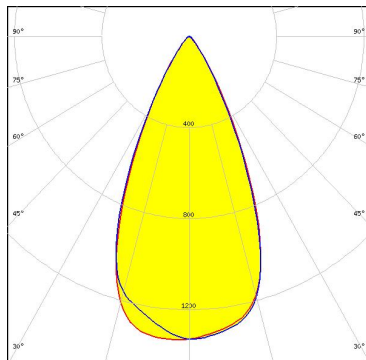

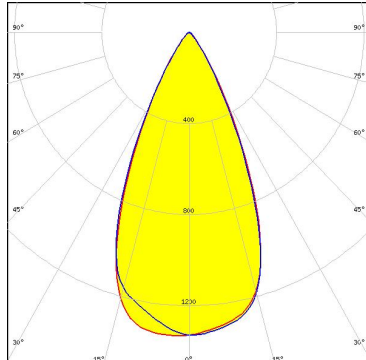
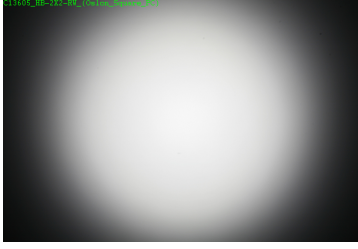
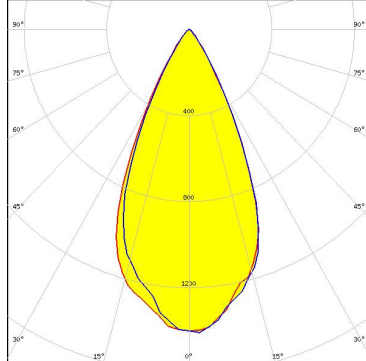
LED NVSxE21A
 FWHM 37.0°
 Efficiency 84 %
 Peak intensity 1.600 cd/lm
 LEDs/each optic 1
 Light colour White
 Required components:



LED NVSxx19A
 FWHM 52.0°
 Efficiency 88 %
 Peak intensity 1.300 cd/lm
 LEDs/each optic 1
 Light colour White
 Required components:



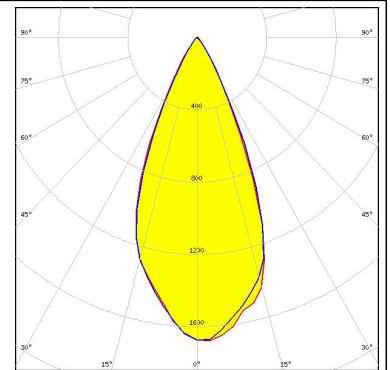
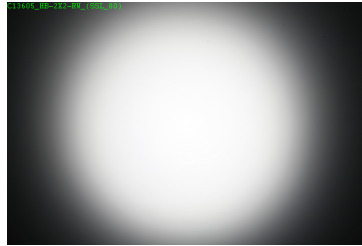
PHOTOMETRIC DATA (MEASURED):

| | | |
|--|--|---|
| <p>NICHIA</p> <p>LED NVSxx19B/NVSxx19C FWHM 51.0° Efficiency 90 % Peak intensity 1.300 cd/lm LEDs/each optic 1 Light colour White Required components:</p> |  |  |
| <p>OSRAM</p> <p>LED PrevalLED Brick HP 2x8 FWHM 49.0° Efficiency 89 % Peak intensity 1.300 cd/lm LEDs/each optic 1 Light colour White Required components:</p> |  |  |
| <p>OSRAM <small>Opto Semiconductors</small></p> <p>LED OSOLON Square CSSRM2/CSSRM3 FWHM 49.0° Efficiency 89 % Peak intensity 1.300 cd/lm LEDs/each optic 1 Light colour White Required components:</p> |  |  |
| <p>OSRAM <small>Opto Semiconductors</small></p> <p>LED OSOLON Square PC FWHM 50.0° Efficiency 90 % Peak intensity 1.400 cd/lm LEDs/each optic 1 Light colour White Required components:</p> |  |  |

PHOTOMETRIC DATA (MEASURED):

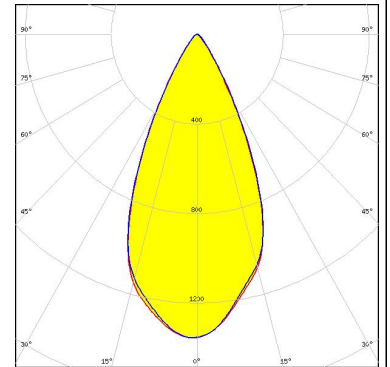
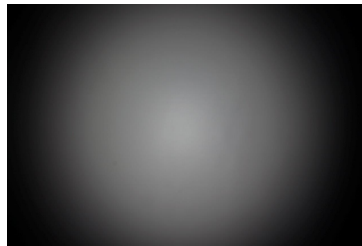
OSRAM
Opto Semiconductors

LED OSLON SSL 80
FWHM 46.0°
Efficiency 90 %
Peak intensity 1.700 cd/lm
LEDs/each optic 1
Light colour White
Required components:



SAMSUNG

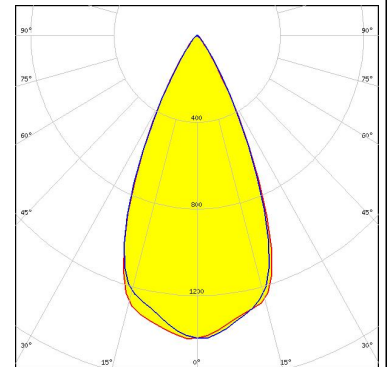
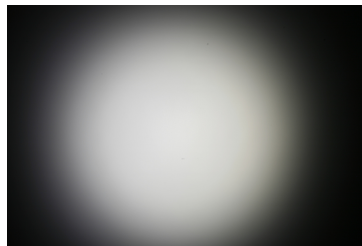
LED LH351Z
FWHM 48.0°
Efficiency 90 %
Peak intensity 1.400 cd/lm
LEDs/each optic 1
Light colour White
Required components:



SEOL

SEOUL SEMICONDUCTOR

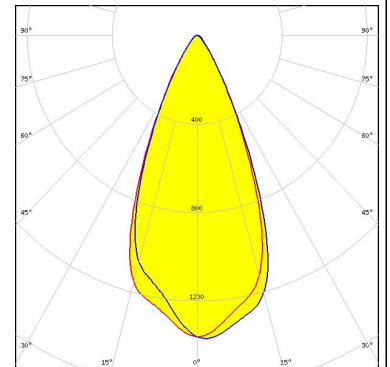
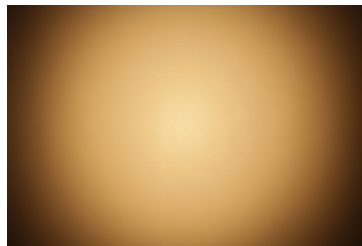
LED Z5M1/Z5M2
FWHM 49.0°
Efficiency 90 %
Peak intensity 1.400 cd/lm
LEDs/each optic 1
Light colour White
Required components:




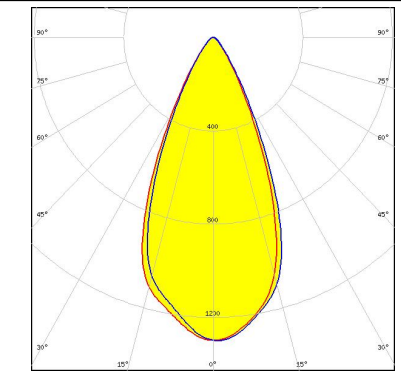

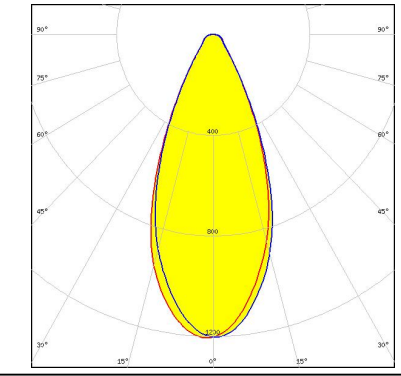
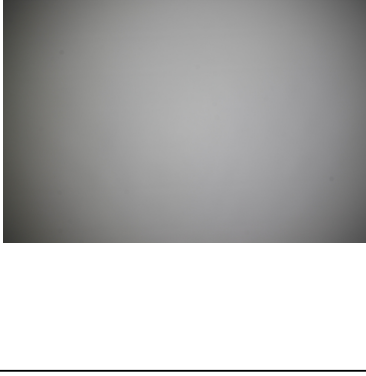
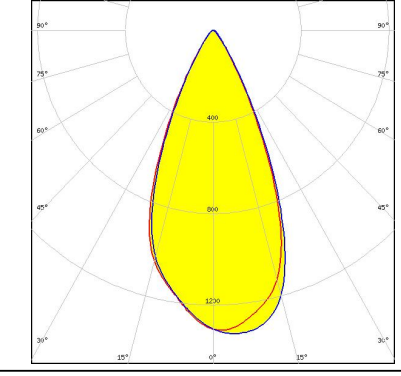

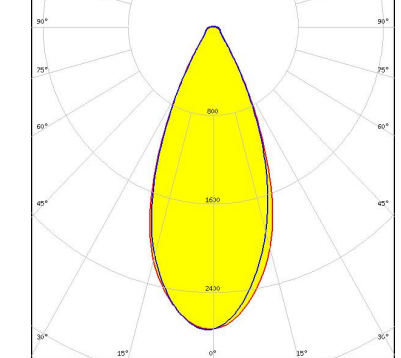
SEOL

SEOUL SEMICONDUCTOR

LED Z8Y15
FWHM 46.0°
Efficiency 88 %
Peak intensity 1.400 cd/lm
LEDs/each optic 1
Light colour White
Required components:



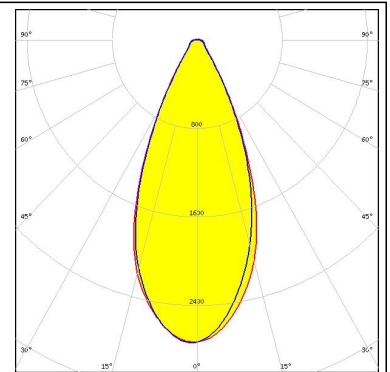
PHOTOMETRIC DATA (MEASURED):

| | | |
|--|--|---|
| <p>SEOL SEOUL SEMICONDUCTOR</p> <p>LED Z8Y19 FWHM 47.0° Efficiency 87 % Peak intensity 1.300 cd/lm LEDs/each optic 1 Light colour White Required components:</p> |  |  |
| <p>SEOL SEOUL SEMICONDUCTOR</p> <p>LED Z8Y22 FWHM 45.0° Efficiency 93 % Peak intensity 1.200 cd/lm LEDs/each optic 1 Light colour White Required components:</p> |  |  |
| <p>TOSHIBA Leading Innovation >>></p> <p>LED TL1L4 FWHM 47.0° Efficiency 83 % Peak intensity 1.300 cd/lm LEDs/each optic 1 Light colour White Required components:</p> |  |  |
| <p>TRIDONIC</p> <p>LED RLE G1 49x121mm 2000lm xxx EXC OTD FWHM 45.0° Efficiency 94 % Peak intensity 1.400 cd/lm LEDs/each optic 1 Light colour White Required components:</p> |  |  |

PHOTOMETRIC DATA (MEASURED):

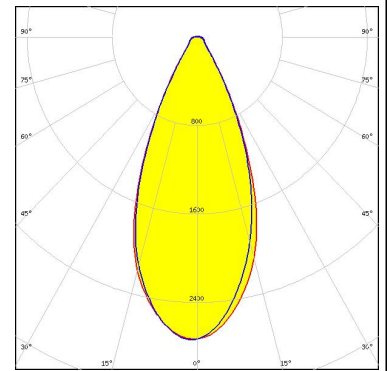
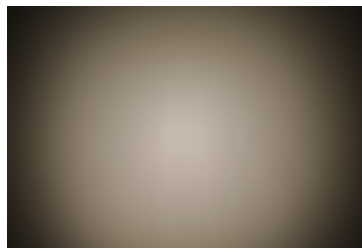
TRIDONIC

LED RLE G1 49x133mm 2000lm xxx EXC OTD
FWHM 45.0°
Efficiency 94 %
Peak intensity 1.400 cd/lm
LEDs/each optic 1
Light colour White
Required components:



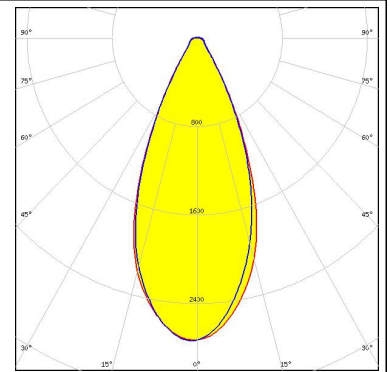
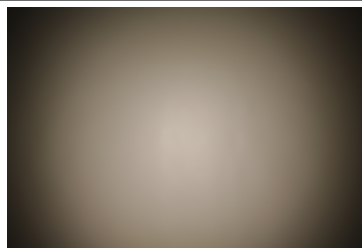
TRIDONIC

LED RLE G1 49x223mm 4000lm xxx EXC OTD
FWHM 45.0°
Efficiency 94 %
Peak intensity 1.400 cd/lm
LEDs/each optic 1
Light colour White
Required components:



TRIDONIC

LED RLE G1 49x245mm 4000lm xxx EXC OTD
FWHM 45.0°
Efficiency 94 %
Peak intensity 1.400 cd/lm
LEDs/each optic 1
Light colour White
Required components:



GENERAL INFORMATION:

NOTE: The typical beam angle will be changed by different color, chip size and chip position tolerance. The typical total beam angle is the full angle measured where the luminous intensity is half of the peak value.

MATERIALS:

As part of our continuous research and improvement processes, and to ensure the best possible quality and availability of our products, LEDiL reserves the right to change material grades without notice.

PRODUCT DATA USER AGREEMENT AND DISCLAIMER:

The measured data in the provided downloadable LEDiL Product Datasheets and Mechanical 2D-Drawings is rounded and provided as reference for planning. LEDiL Oy's optical specifications have been verified by conducting performance testing of the products in accordance with the company's quality system. The reported data are averaged results of multiple measurements with typical variation. LEDiL Oy reserves the right to without prior notification make changes and improvements to its products.

LEDiL Oy assumes neither warranty, nor guarantee nor any other liability of any kind for the contents and correctness of the provided data. The provided data has been generated with highest diligence but the provided data may in reality not represent the complete possible variation range of all intrinsic parameters. Therefore, in certain cases a deviation from the provided data could occur.

LEDiL Oy reserves the right to undertake technical changes of its products without further notification which could lead to changes in the provided data. LEDiL Oy assumes no liability of any kind for the possible deviation from any provided data or any other damage resulting from the usage of the provided data.

The user agrees to this disclaimer and user agreement with the download or usage of the provided files.

LEDiL Oy

Joensuunkatu 13
FI-24240 SALO
Finland

LEDiL Inc.

228 West Page Street
Suite D
Sycamore IL 60178
USA

Local sales and technical support

[www.ledil.com/
where_to_buy](http://www.ledil.com/where_to_buy)

Shipping locations

Salo, Finland
Hong Kong, China

Distribution Partners

[www.ledil.com/
where_to_buy](http://www.ledil.com/where_to_buy)