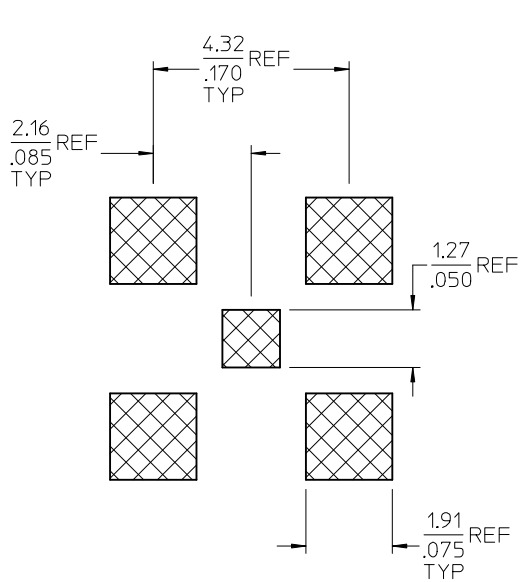
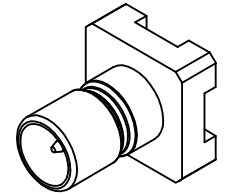


MATERIALS AND FINISHES

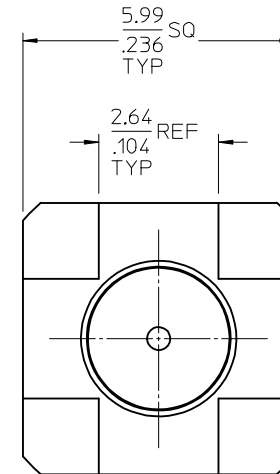
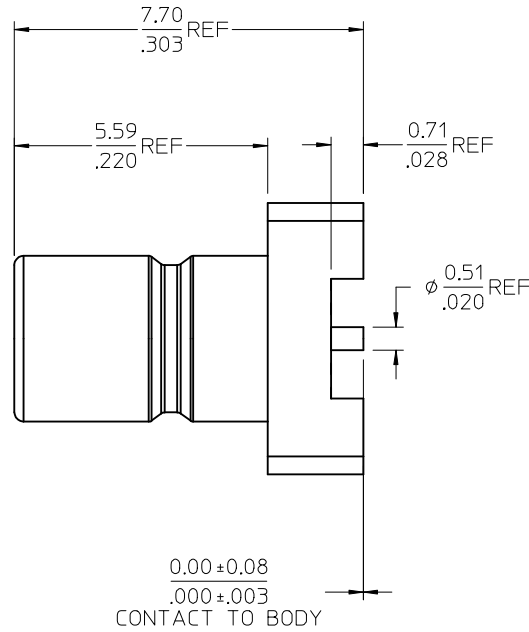
BODY BRASS  
PLATED GOLD

CENTER CONTACT BRASS  
PLATED GOLD

INSULATOR TEFLON



RECOMMENDED PAD LAYOUT



PART # 73404-0190

-----	INTERFACE
SPECIFICATION	DESCRIPTION

UNLESS OTHERWISE SPECIFIED DIMS ARE MILLIMETERS AND ANGLES ARE DEGREES.

- ALL OVER.
- NO CHATTER OR NON-UNIFORM SURFACE FINISH ALLOWED.
- PARTS TO BE FREE OF BURRS & SHARP EDGES 0.13(.005) MAX BREAK.
- EXTERNAL THREADS TO BE ROLLED OR SINGLE POINT.
- DIAMETERS TO BE CONCENTRIC WITHIN 0.08(.003) TIR.

CHG: NEW RELEASE  
5.99 SQ WAS 6.35,  
7.70 REF WAS 8.20,  
5.59 REF WAS 6.12,  
0.71 REF WAS 1.27,  
4.32 TYP WAS  
4.75 TYP. Ø0.51 REF  
WAS Ø0.97  
REMOVED 1.60 SQ  
ADDED 2.64 REF

EC NO: URF2005-0495  
2005/05/18  
DRW:SSHAH  
2005/05/18  
CHKD:  
2005/05/19  
APPR:JWIENER

QUALITY SYMBOLS

▽=0

▽=0

GENERAL TOLERANCES (UNLESS SPECIFIED)

	mm	INCH
4 PLACES	± .15	± .005
3 PLACES	± .10	± .004
2 PLACES	± .075	± .003
1 PLACE	± .05	± .002

ANGULAR ± 2 °

DRAFT WHERE APPLICABLE MUST REMAIN WITHIN DIMENSIONS

DIMENSION STYLE  
MM/IN

DRAWN BY DATE  
SSS 2005/05/17

CHECKED BY DATE  
TEF 2005/05/17

APPROVED BY DATE  
JDW 2005/05/17

MATERIAL NO.  
734040190

SIZE  
C

SCALE  
DESIGN UNITS  
METRIC

THIRD ANGLE PROJECTION

TITLE  
SMB JACK, 75 OHMS, PCB  
AIR DIELECTRIC, EWR2803  
SMB-J/PCB

MOLEX MOLEX INCORPORATED

DOCUMENT NO.  
SD-73404-019

SHEET NO.  
1 OF 1

THIS DRAWING CONTAINS INFORMATION THAT IS PROPRIETARY TO MOLEX INCORPORATED AND SHOULD NOT BE USED WITHOUT WRITTEN PERMISSION