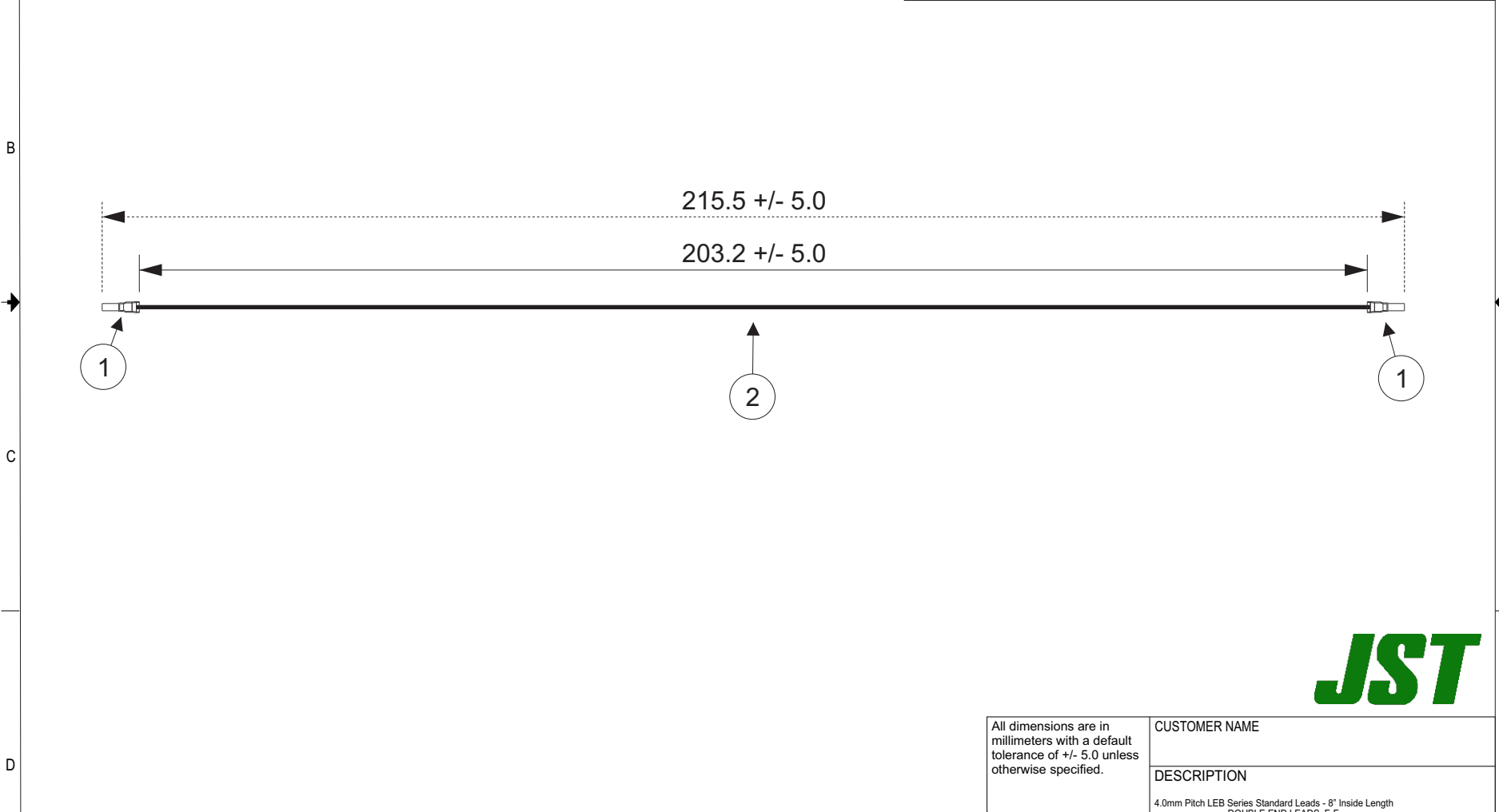


THIS DRAWING CONTAINS INFORMATION THAT IS PROPRIETARY TO J.S.T. AND SHALL NOT BE USED OR SHOWN WITHOUT WRITTEN PERMISSION.

1	2	3	4	5	6	7	8			
Item No.	Part No.	Description			<b>APPLICABLE HOUSINGS</b>					
1	SLEB-001T-P0.2	LEB Connector Contact			<b>NO. OF CIRCUITS</b>		<b>HOUSING PART NO.</b>			
2	UL1061, 22 AWG	Black			1		LEBRP-01V-S			
<table border="1"> <tr> <td><u>Electrical Specifications</u></td> </tr> <tr> <td>Current: 3.0AAC/DC</td> </tr> <tr> <td>Voltage: 300V AC/DC</td> </tr> </table>			<u>Electrical Specifications</u>	Current: 3.0AAC/DC	Voltage: 300V AC/DC			2		LEBRP-02V-S
<u>Electrical Specifications</u>										
Current: 3.0AAC/DC										
Voltage: 300V AC/DC										



All dimensions are in millimeters with a default tolerance of +/- 5.0 unless otherwise specified.		CUSTOMER NAME			
		DESCRIPTION 4.0mm Pitch LEB Series Standard Leads - 8" Inside Length DOUBLE END LEADS, F-F			
Drawn By: Larissa Mosley	SIZE	CUSTOMER PART NO.	PART NO.	REV	
Checked By: Steven Pilkington	SCALE 1:1	DRAWING NO. GAM-410	ALEBLEB22K203	DATE 5/22/2018	

ZONE	REV	DESCRIPTION	DATE	APPROVED
1	1	Add Electrical Specifications	7/02/2018	LM