

## 4600W, 10V – 43V Surface Mount Transient Voltage Suppressor

### FEATURES

- AEC-Q101 qualified
- Junction passivation optimized design technology
- $T_J = 175\text{ °C}$  capability suitable for high reliability and automotive requirement
- Moisture sensitivity level: level 1, per J-STD-020
- RoHS Compliant
- Halogen-free according to IEC 61249-2-21
- Meets ISO7637-2 and ISO16750-2 surge specifications (varied by test conditions)
- Meets IEC 61000-4-2 (Level: 4) / ISO 10605 (Level: L4)

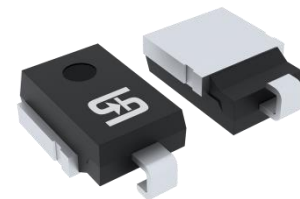
### APPLICATIONS

- Transient Surge Protection
- Automotive Load Dump Surge Protection

### MECHANICAL DATA

- Case: DO-218AB
- Molding compound meets UL 94V-0 flammability rating
- Terminal: Matte tin plated leads, solderable per J-STD-002
- Meet JESD 201 class 2 whisker test
- Polarity: Uni-directional
- Weight: 2.682g (approximately)

KEY PARAMETERS		
PARAMETER	VALUE	UNIT
$V_{WM}$	10 – 43	V
$V_{BR}$	11.1 – 52.8	V
$P_{PPM}$ (10x1,000 $\mu$ s)	4600	W
$P_{PPM}$ (10x10,000 $\mu$ s)	3600	W
$T_{J\text{ MAX}}$	175	°C
Package	DO-218AB	
Configuration	Single die	



DO-218AB



ABSOLUTE MAXIMUM RATINGS ( $T_A = 25\text{ °C}$ unless otherwise noted)			
PARAMETER	SYMBOL	VALUE	UNIT
Non-repetitive peak impulse power dissipation with 10/1000 $\mu$ s waveform	$P_{PPM}$	4600	W
Non-repetitive peak impulse power dissipation with 10/10000 $\mu$ s waveform <sup>(1)</sup>	$P_{PPM}$	3600	W
Steady state power dissipation <sup>(Fig.1)</sup>	$P_D$	6	W
Forward Voltage at $I_F = 100\text{ A}$ <sup>(2)</sup>	$V_{F, \text{ MAX}}$	1.9	V
Peak forward surge current, 8.3ms single half sine-wave	$I_{FSM}$	600	A
Junction temperature	$T_J$	-55 to +175	°C
Storage temperature	$T_{STG}$	-55 to +175	°C

#### Notes:

1. Non-repetitive current pulse per Fig.3
2. Pulse test with  $PW = 0.3\text{ ms}$

<b>THERMAL PERFORMANCE</b>			
<b>PARAMETER</b>	<b>SYMBOL</b>	<b>TYP</b>	<b>UNIT</b>
Junction-to-case thermal resistance	$R_{\theta JC}$	0.85	°C/W

Thermal Performance Note: With ideal heatsink

<b>ELECTRICAL SPECIFICATIONS</b> ( $T_A = 25^\circ\text{C}$ unless otherwise noted)										
Part number	Marking code	Breakdown voltage $V_{BR}$ at $I_T$ (V) (Note 1)		Test current $I_T$ (mA)	Working stand-off voltage $V_{WM}$ (V)	Maximum blocking leakage current $I_R$ at $V_{WM}$ ( $\mu\text{A}$ ) (Note 1)	Maximum blocking leakage current $I_R$ at $V_{WM}$ $T_J = 175^\circ\text{C}$ ( $\mu\text{A}$ ) (Note 1)	Maximum peak impulse current $I_{PPM(A)}$ $t_p = 10/1000$ ( $\mu\text{s}$ )	Maximum clamping voltage $V_C$ at $I_{PPM}$ (V)	Typical temp. coefficient of $V_{BR}$ $\alpha T$ ( $\%/^\circ\text{C}$ ) (Note 2)
		Min	Max							
TLD6S10AH	TLD6S10A	11.1	12.3	5.0	10.0	15	250	271	17.0	0.069
TLD6S11AH	TLD6S11A	12.2	13.5	5.0	11.0	10	150	253	18.2	0.072
TLD6S12AH	TLD6S12A	13.3	14.7	5.0	12.0	10	150	231	19.9	0.074
TLD6S13AH	TLD6S13A	14.4	15.9	5.0	13.0	10	150	214	21.5	0.076
TLD6S14AH	TLD6S14A	15.6	17.2	5.0	14.0	10	150	198	23.2	0.078
TLD6S15AH	TLD6S15A	16.7	18.5	5.0	15.0	10	150	189	24.4	0.080
TLD6S16AH	TLD6S16A	17.8	19.7	5.0	16.0	10	150	177	26.0	0.081
TLD6S17AH	TLD6S17A	18.9	20.9	5.0	17.0	10	150	167	27.6	0.082
TLD6S18AH	TLD6S18A	20.0	22.1	5.0	18.0	10	150	158	29.2	0.083
TLD6S20AH	TLD6S20A	22.2	24.5	5.0	20.0	10	150	142	32.4	0.085
TLD6S22AH	TLD6S22A	24.4	26.9	5.0	22.0	10	150	130	35.5	0.086
TLD6S24AH	TLD6S24A	26.7	29.5	5.0	24.0	10	150	118	38.9	0.087
TLD6S26AH	TLD6S26A	28.9	31.9	5.0	26.0	10	150	106	42.1	0.088
TLD6S28AH	TLD6S28A	31.1	34.4	5.0	28.0	10	150	101	45.4	0.089
TLD6S30AH	TLD6S30A	33.3	36.8	5.0	30.0	10	150	95	48.4	0.090
TLD6S33AH	TLD6S33A	36.7	40.6	5.0	33.0	10	150	86	53.3	0.091
TLD6S36AH	TLD6S36A	40.0	44.2	5.0	36.0	10	150	79	58.1	0.091
TLD6S40AH	TLD6S40A	44.4	49.1	5.0	40.0	10	150	71	64.5	0.092
TLD6S43AH	TLD6S43A	47.8	52.8	5.0	43.0	10	150	66	69.4	0.093

**Note:**

1. Pulse test with  $PW = 30\text{ms}$
2. To calculate  $V_{BR}$  vs. junction temperature, use the following formula:  

$$V_{BR} \text{ at } T_J = V_{BR} \text{ at } 25^\circ\text{C} \times (1 + \alpha T (T_J - 25))$$

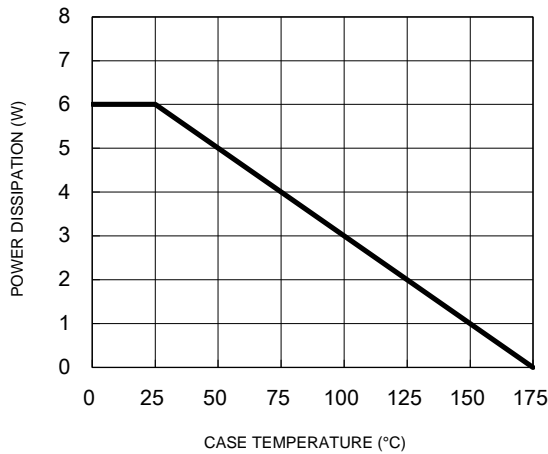
<b>ORDERING INFORMATION</b>		
<b>ORDERING CODE<sup>(1)</sup></b>	<b>PACKAGE</b>	<b>PACKING</b>
TLD6SxAH	DO-218AB	750 / Tape & Reel

Note: "x" defines voltage from 10V (TLD6S10AH) to 43V (TLD6S43AH)

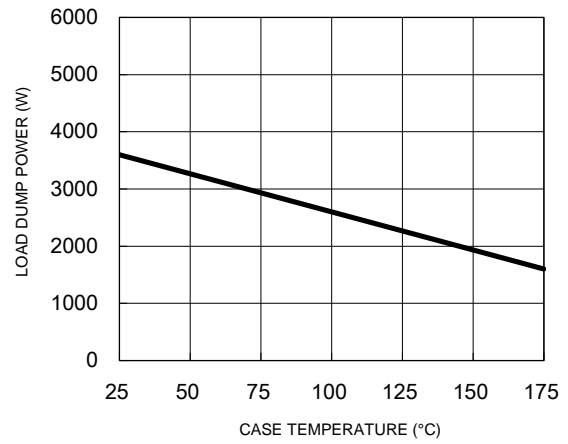
**CHARACTERISTICS CURVES**

( $T_A = 25^\circ\text{C}$  unless otherwise noted)

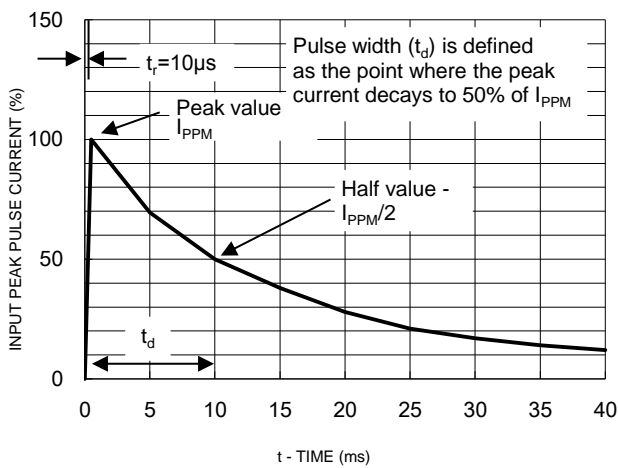
**Fig.1 Power Derating Curve**



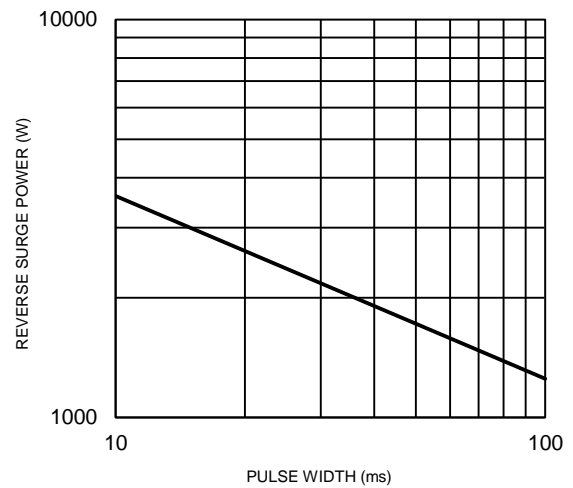
**Fig.2 Load Dump Power Characteristics (10ms Exponential Waveform)**



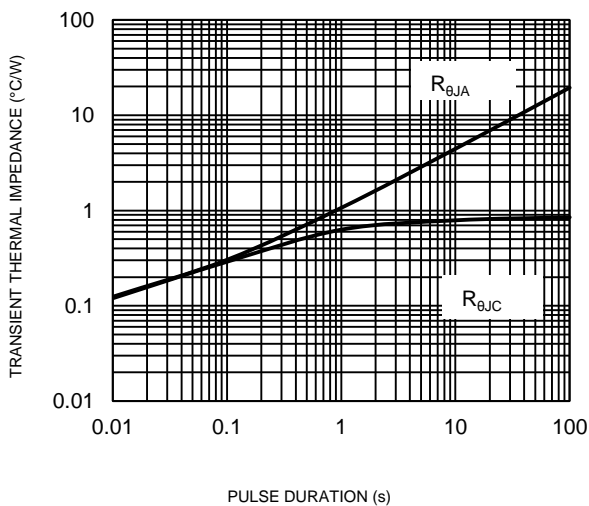
**Fig.3 Clamping Power Pulse Waveform**



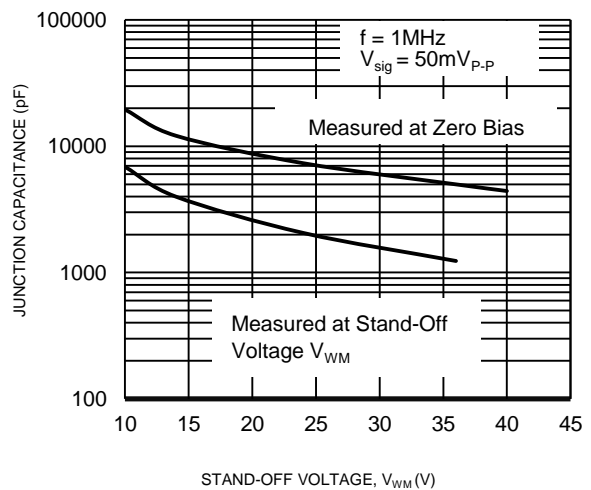
**Fig.4 Reverse Power Capability**



**Fig.5 Typical Transient Thermal Impedance**

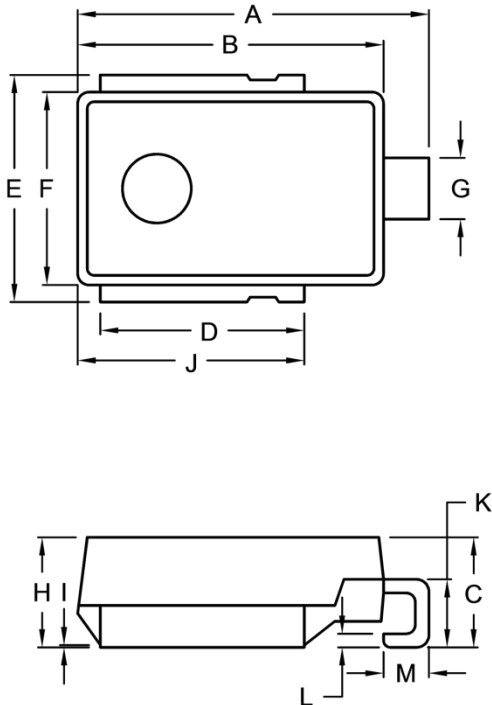


**Fig.6 Typical Junction Capacitance**



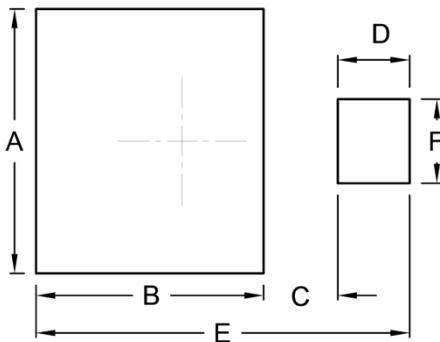
**PACKAGE OUTLINE DIMENSIONS**

DO-218AB



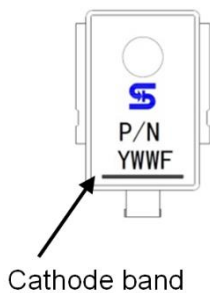
DIM.	Unit (mm)		Unit (inch)	
	Min.	Max.	Min.	Max.
A	15.00	16.00	0.591	0.630
B	13.30	13.70	0.524	0.539
C	4.70	5.50	0.185	0.217
D	8.70	9.30	0.343	0.366
E	9.50	10.50	0.374	0.413
F	8.30	8.70	0.327	0.343
G	2.40	3.00	0.094	0.118
H	4.70	5.00	0.185	0.197
I	0.00	0.10	0.000	0.004
J	9.70	10.30	0.382	0.406
K	2.50	3.50	0.098	0.138
L	0.50	0.70	0.020	0.028
M	1.50	2.50	0.059	0.098

**SUGGESTED PAD LAYOUT**



Symbol	Unit (mm)	Unit (inch)
A	11.00	0.433
B	9.50	0.374
C	3.10	0.122
D	3.00	0.118
E	15.60	0.614
F	3.50	0.138

**MARKING DIAGRAM**



P/N = Marking Code  
YWWF = Date Code  
F = Factory Code

## **Notice**

Specifications of the products displayed herein are subject to change without notice. TSC or anyone on its behalf, assumes no responsibility or liability for any errors or inaccuracies.

Purchasers are solely responsible for the choice, selection, and use of TSC products and TSC assumes no liability for application assistance or the design of Purchasers' products.

Information contained herein is intended to provide a product description only. No license, express or implied, to any intellectual property rights is granted by this document. Except as provided in TSC's terms and conditions of sale for such products, TSC assumes no liability whatsoever, and disclaims any express or implied warranty, relating to sale and/or use of TSC products including liability or warranties relating to fitness for a particular purpose, merchantability, or infringement of any patent, copyright, or other intellectual property right.

The products shown herein are not designed for use in medical, life-saving, or life-sustaining applications. Customers using or selling these products for use in such applications do so at their own risk and agree to fully indemnify TSC for any damages resulting from such improper use or sale.