

# MAGNASPHERE HSS INSTALLATION INSTRUCTIONS: All Models of L2C-[XXX] Series



CAUTION: MAGNASPHERE MAGNET MODULES ARE EXTREMELY POWERFUL: TAKE PRECAUTIONS TO AVOID THE MAGNETIC ATTRACTION OF SHARP TOOLS AND TO AVOID INJURY FROM THE PINCHING FORCE BETWEEN THE MAGNET AND FERROUS METALS OR OTHER MAGNETS.

Attention: modules à aimants Magnasphere et anti-enlèvement aimants sont très puissants: prendre des précautions pour éviter l'attraction magnétique d'outils tranchants et à éviter les blessures de la force de pincement entre l'aimant et les métaux ferreux ou d'autres aimants.



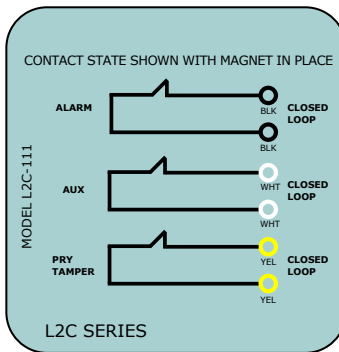
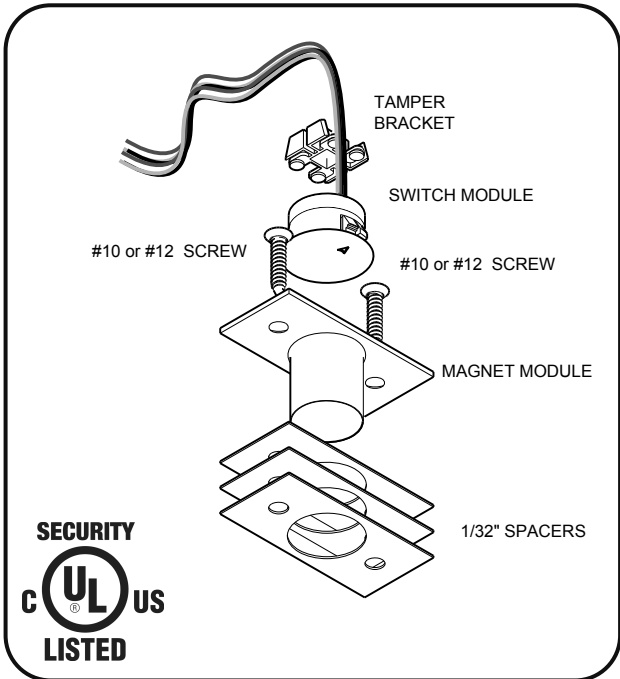
## Required Tools and Components

### Provided by Manufacturer (per module set)

- 1 L2C switch module
- 1 L2C magnet module
- 2 #10 or #12 screws, magnet module
- 3 Spacers, magnet module
- 1 Tamper bracket

### Provided by Installer

- Blade screwdriver or a blade bit for use in the drill/bit-driver
- RTV Adhesive for some sites (review instructions below)
- Additional 1/32" SPACERS as needed (10 / BAG – MAGNASPHERE P/N 1222)
- Door & frame as prepared in figure below †
- Tamper Test Magnet: optionally used for non-invasive tamper switch tests P/N 1384



### Specifications

**Max Current:** 0.25 A Resistive

**Max Voltage:** 30 VDC

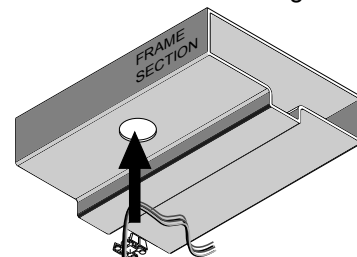
**Max Power:** .25 W Resistive

The Magnasphere L2C series is intended to be connected to a UL Listed compatible control panel for US applications and a ULC Listed compatible control panel for Canadian applications.

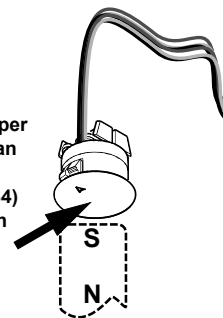
**Gap:** 0" to 1/8"

**Suitable for outdoor use**

## LEVEL 2 CONCEALED: High Security contacts for recessed mounting



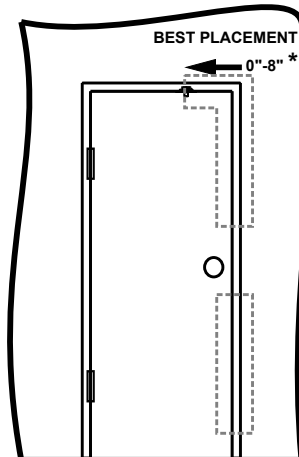
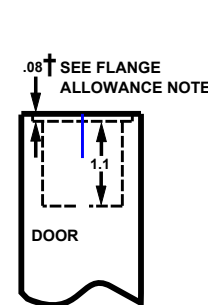
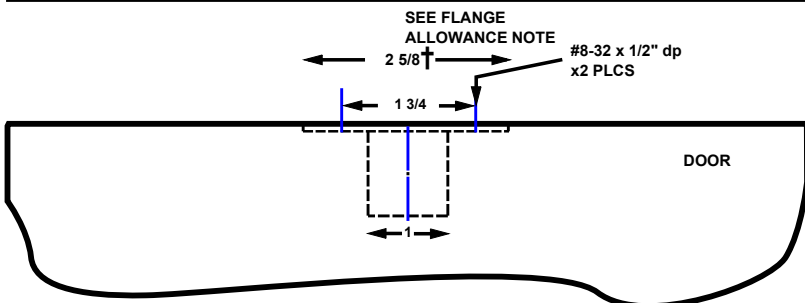
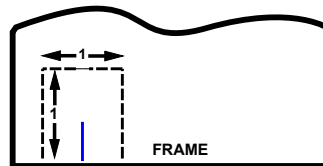
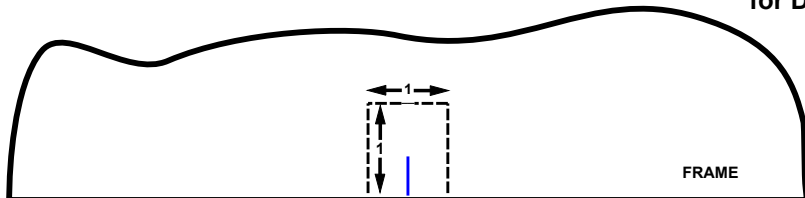
Test the Pry-Tamper circuit here with an L2C Tamper Test Magnet (P/N #1384) for installations in non-ferrous (aluminum) environments



Models having the following suffixes are equipped with pry-tampers, a requirement of UL634 High Security Levels 1 and 2: -101, -111

### Installation:

### Recommended Minimum Clearances and Features for Door & Frame Cutouts

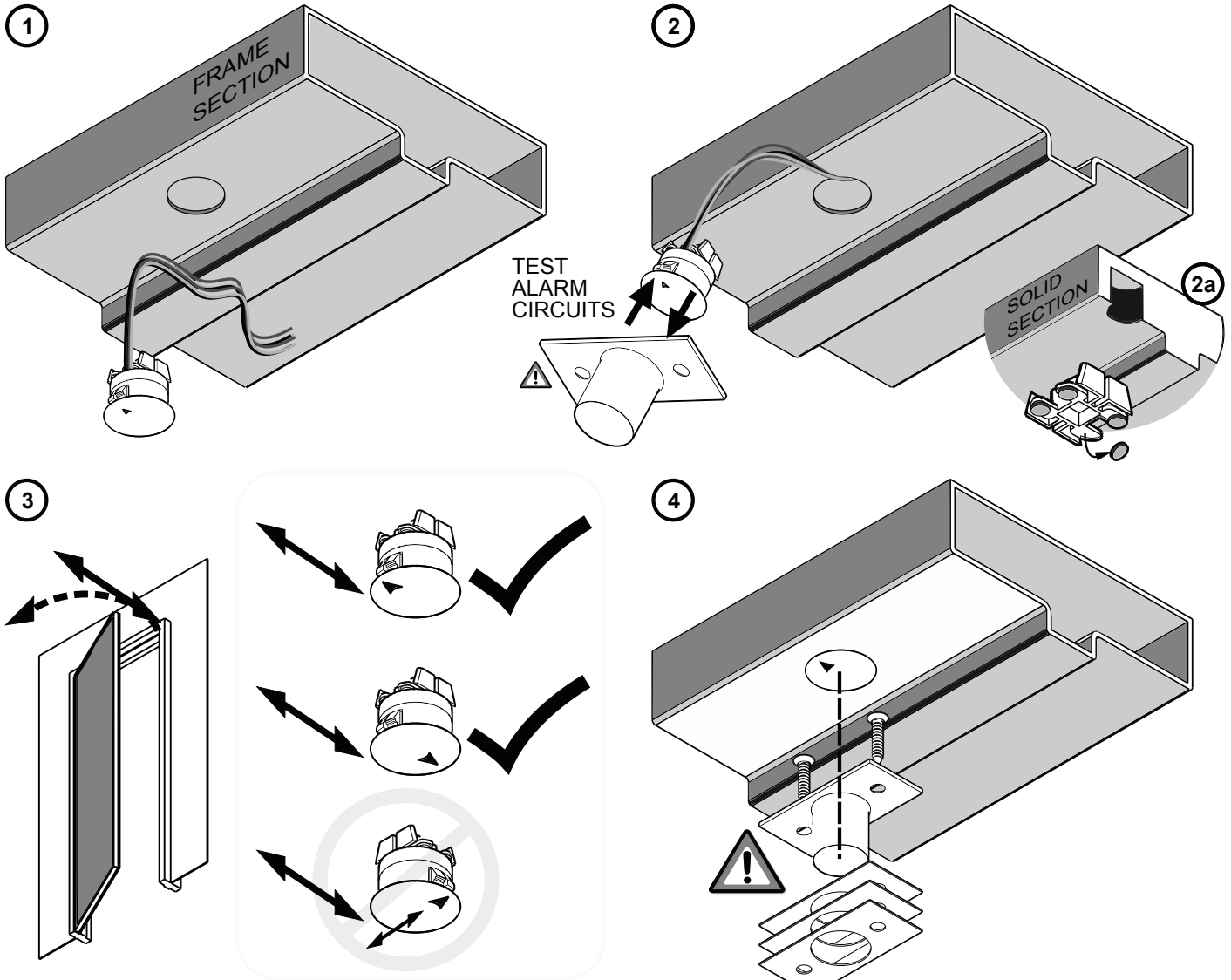


Plan to mount the switch module into the door frame. The magnet module should be mounted opposed and aligned to the switch, within the door. Recommended placement for the set is 8 inches from the latch side of the door, at the top. **A gap up to 1/16" (1.6mm) is recommended though the switch can be installed to a 1/8" (3.2mm) maximum operating gap.** For UL compliance, the installation must be in a metal frame with a 5/8" (minimum) door stop; the modules must have an operating gap no greater than 1/8".

† It is not necessary to make allowance for the face-plate/flange of the magnet module if it fits with the switch module flange in the door-to-frame gap.

\*Recommended placement to meet door-opening, alarm, & nuisance alarm requirements of UL634 Level 2 standard. This guide is one means to meet this standard. Installations which fulfill this standard are not restricted to the specific recommendations in this instruction set.

(continued) instructions:



1: Prepare a deburred 1" hole directly opposite to the mounting site of the magnet module. Center-to-center alignment of the modules is required for reliable operation.

2: Wire and test the switch module before inserting the switch module. (The switch module is not meant for in-tact removal once installed.) The tamper circuit (if equipped) must be wired to a 24-hr protection circuit. All wires must route within the metal frame. 2a. FOR INSTALLATIONS INTO A BORE (eg. concrete-filled frame) ONLY: Peel off the tamper bracket and remove all adhesive pads (to ensure the tamper bracket will hold to the bore in the case of switch-removal tampering).

3: For dual alarm switches (L2C-11X), proper orientation of the arrow mark (switch module) will improve synchronization of the contacts' closure; RTV or adhesive may be applied to insure that the arrow mark remains pointing along the path of the door swing.

4: Insert the switch module into the frame cutout. Ensure that it is fully nested into position. For dual alarm switches, orient the arrow mark pointing along the door's travel path (either direction).

**⚠ CAUTION: Magnasphere's magnet module is extremely powerful: Take precautions to avoid the magnetic attraction between the magnet and ferrous metals (or other magnets). ⚠**

Determine whether magnet spacers will be necessary to achieve the operating gap. An operating gap of 0" to 1/8" is required for compliance with UL634 Level 2, C634 high security standard. 5: Fit and fasten the magnet module into the door cutout. The mechanical installation of the set is complete.

NOTE: The pry tamper will be in alarm condition when the switch module is removed from the tamper bracket 1/32" - 1/4"

01-2014 L2C-XXX-INST REV. D

#RE 39731, #5977873, #6506987, #6603378,  
#6803845, #7944334, #8487726 & Other Patents Pending

MAGNASPHERE® 

MAGNASPHERE N22 W22931 Nancys Ct. Ste 3, Waukesha, WI 53186 tel 262.347.0711 fax 262.347.0710 www.magnasphere.com