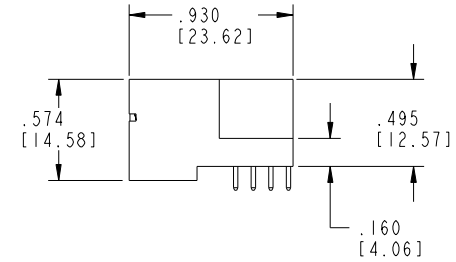
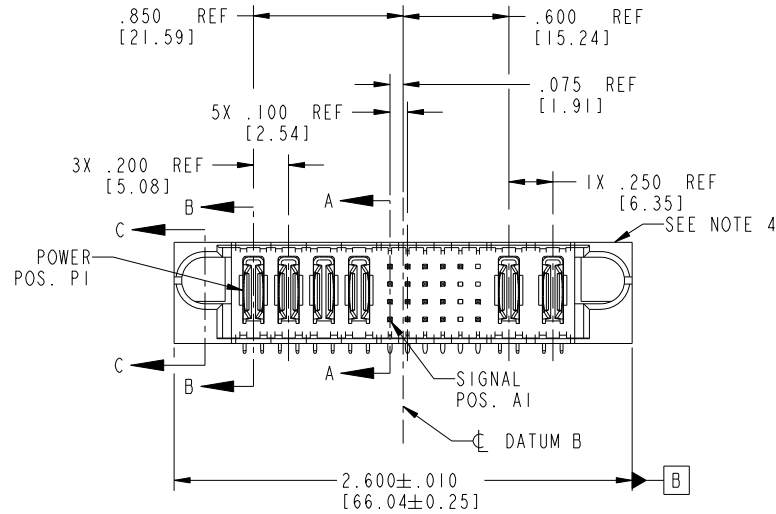


Tous droits strictement reserves. Reproduction ou communication a des tiers interdite sous quelque forme que ce soit sans autorisation écrite du propriétaire. Propriete de c FCI. Droits de reproduction FCI.



All rights strictly reserved. Reproduction or issue to third parties in any form whatever is not permitted without written authority from the proprietor. Property of FCI. Copyright FCI.

|                         |                  |       |    |    |    |        |   |   |   |   |   |       |    |    |    |
|-------------------------|------------------|-------|----|----|----|--------|---|---|---|---|---|-------|----|----|----|
| PRODUCT NO.             | ROWS             | POWER |    |    |    | SIGNAL |   |   |   |   |   | POWER |    | E2 |    |
|                         |                  | E1    | P1 | P2 | P3 | P4     | 1 | 2 | 3 | 4 | 5 | 6     | P5 |    | P6 |
| 51939-038...<br>NOTE: 3 | D<br>C<br>B<br>A |       |    |    |    |        |   |   |   |   |   |       |    |    |    |



| CODE | DIM "M" MATING LENGTH | CONTACT TYPE |
|------|-----------------------|--------------|
| E    | .220 [5.59]           | SIGNAL       |
| F    | .220 [5.59]           | SIGNAL       |
| R    | .270 [6.86]           | SIGNAL       |
| S    | .270 [6.86]           | SIGNAL       |
| T    | .270 [6.86]           | SIGNAL       |
| U    | .270 [6.86]           | SIGNAL       |
| PA   | N/A [N/A]             | POWER        |
| X    | OMITTED               |              |

|             |           |                |          |            |                       |                                       |            |          |                           |                        |           |
|-------------|-----------|----------------|----------|------------|-----------------------|---------------------------------------|------------|----------|---------------------------|------------------------|-----------|
| mat'l code  |           |                |          | SEE NOTE 2 |                       | tolerances unless otherwise specified |            | CUSTOMER |                           | <br>www.fciconnect.com |           |
| ltr         | ecn no.   | dr             | date     | linear     | .XX±.01/0.X±0.3       |                                       | COPY       |          | title                     |                        |           |
| A           | V03-0058  | TAB            | 01/13/03 |            | .XXX±.005/0.XX±0.13   |                                       | projection |          | 4P + 24S + 2P             |                        |           |
| B           | DG06-0008 | JMG            | 01/09/06 |            | .XXX±.002/0.XXX±0.051 |                                       |            |          | RIGHT ANGLE SOLDER HEADER |                        |           |
| C           | DG08-0273 | WD             | 12/25/08 |            | 0°±2°                 |                                       |            |          | product family            |                        |           |
|             |           |                |          | dr         | T. BRUNGARD           | 01/13/03                              | INCH/MM    |          | PwrBlade                  |                        | code      |
|             |           |                |          | enrg       | M. MOSTOLLER          | 01/13/03                              | scale      |          | size                      |                        | 213       |
|             |           |                |          | chr        | M. MOSTOLLER          | 01/13/03                              | 1:1        |          | dwg no                    |                        | sheet     |
|             |           |                |          | appd       | M. MOSTOLLER          | 01/13/03                              |            |          | A                         |                        | 51939-038 |
| sheet index |           | revision sheet |          | C          | C                     | C                                     | C          |          |                           | 1 of 4                 |           |
|             |           | 1 2            |          | C          | C                     | C                                     | C          |          |                           | 1 of 4                 |           |

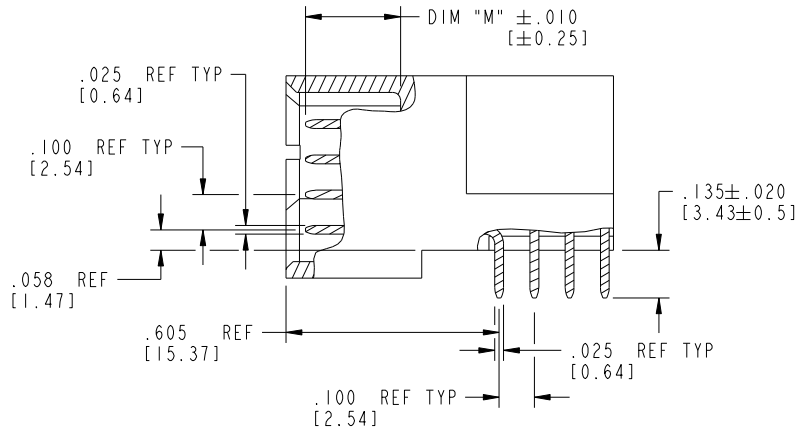
cage code 22526

Pro/E

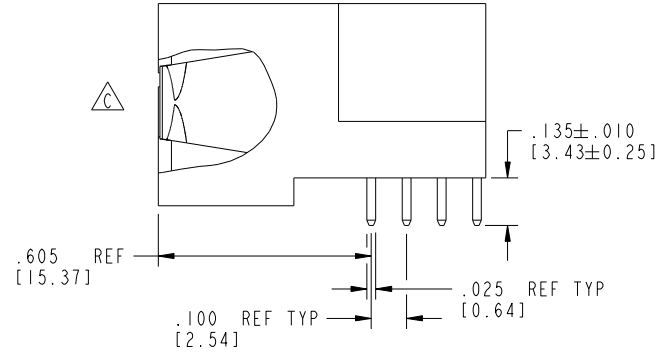
Tous droits strictement reserves. Reproduction ou communication a des tiers interdite sous quelque forme que ce soit sans autorisation écrite du propriétaire. Propriete de c FCI. Droits de reproduction FCI.

All rights strictly reserved. Reproduction or issue to third parties in any form whatsoever is not permitted without written authority from the proprietor. Property of FCI. Copyright FCI.

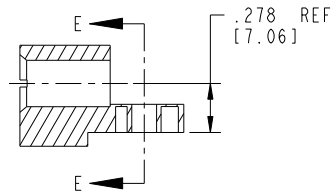
PRODUCT NUMBER  
51939-038\_\_  
NOTE: 3



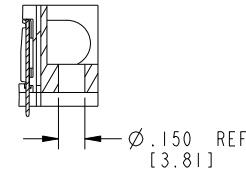
BROKEN-OUT SECTION A-A  
SCALE 2:1



BROKEN-OUT SECTION B-B  
SCALE 2:1



SECTION C-C



PARTIAL SECTION E-E

|             |                |    |      |            |                       |                                       |                           |                    |       |        |  |
|-------------|----------------|----|------|------------|-----------------------|---------------------------------------|---------------------------|--------------------|-------|--------|--|
| mat'l code  |                |    |      | SEE NOTE 2 |                       | tolerances unless otherwise specified |                           | CUSTOMER           |       | FCI    |  |
| ltr         | ecn no.        | dr | date | linear     | .XX±.01/0.X±0.3       | projection                            | COPY                      | www.fciconnect.com |       |        |  |
| C           |                |    |      | linear     | .XXX±.005/0.XX±0.13   | projection                            | title                     | 4P + 24S + 2P      |       |        |  |
|             |                |    |      | angles     | .XXX±.002/0.XXX±0.051 | projection                            | RIGHT ANGLE SOLDER HEADER |                    |       |        |  |
|             |                |    |      | dr         | 0°±2°                 | INCH/MM                               | product family            | PwrBlade           | code  |        |  |
|             |                |    |      | enrg       | T. BRUNGARD 01/13/03  | scale                                 | size                      | dwg no             | 213   |        |  |
|             |                |    |      | chr        | M. MOSTOLLER 01/13/03 | 1:1                                   | A                         | 51939-038          | sheet | 2 of 4 |  |
|             |                |    |      | appd       | M. MOSTOLLER 01/13/03 |                                       |                           |                    |       |        |  |
| sheet index | revision sheet |    |      |            |                       |                                       |                           |                    |       |        |  |

cage code 22526

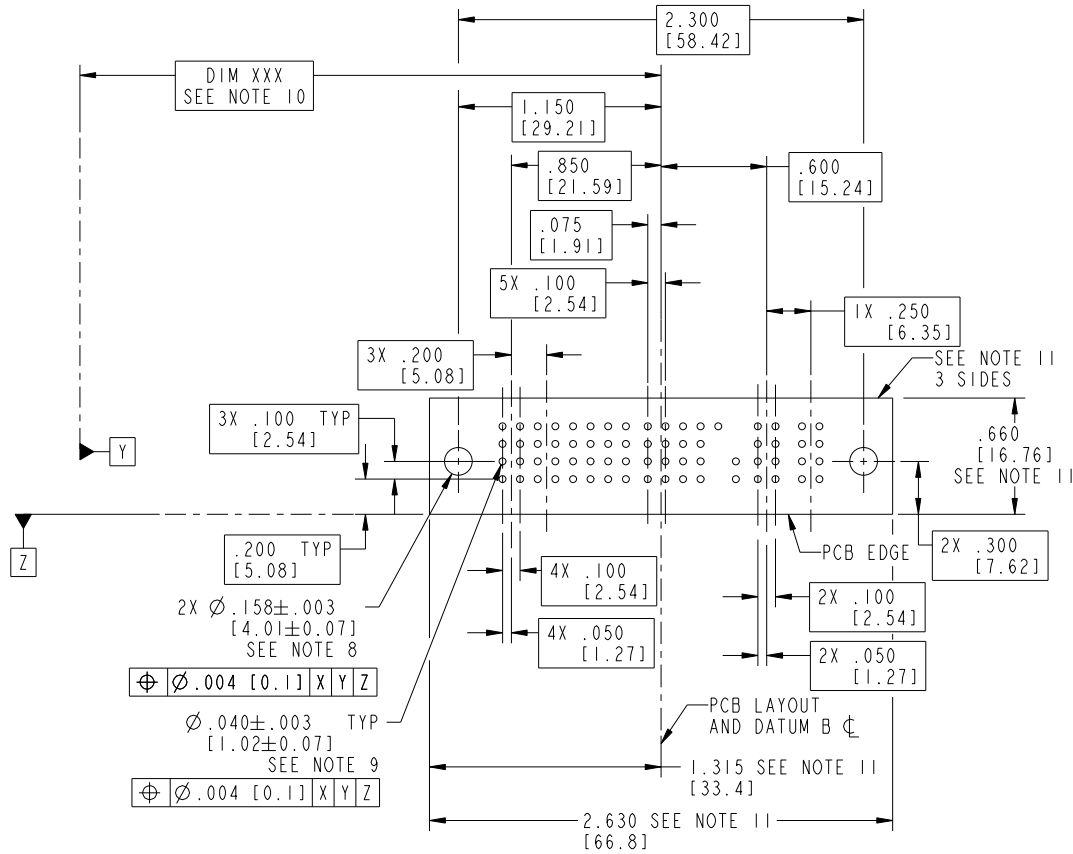
Pro/E

Tous droits strictement reserves. Reproduction ou communication a des tiers interdite sous quelque forme que ce soit sans autorisation écrite du propriétaire. Propriete de c FCI. Droits de reproduction FCI.



All rights strictly reserved. Reproduction or issue to third parties in any form whatsoever is not permitted without written authority from the proprietor. Property of FCI. Copyright FCI.

PRODUCT NUMBER  
51939-038--  
NOTE: 3



RECOMMENDED PCB LAYOUT

|             |                |            |              |                                       |                        |          |  |                        |  |
|-------------|----------------|------------|--------------|---------------------------------------|------------------------|----------|--|------------------------|--|
| mat'l code  |                | SEE NOTE 2 |              | tolerances unless otherwise specified |                        | CUSTOMER |  | <br>www.fciconnect.com |  |
| ltr         | ecn no.        | dr         | date         | linear                                | .XX±.01/0.X±0.3        |          | COPY                                       |                        | <br>title 4P + 24S + 2P<br>RIGHT ANGLE SOLDER HEADER |
| C           |                |            |              |                                       | .XXX±.005/0.XX±0.13    |          | <br>product family PwrBlade code 213       |                        |  |
|             |                |            |              |                                       | .XXX±.0020/0.XXX±0.051 |          | size dwg no<br>A 51939-038<br>sheet 3 of 4 |                        |  |
|             |                |            |              | angles                                | 0°±2°                  |          | scale 1:1                                  |                        |  |
|             |                | dr         | T. BRUNGARD  | 01/13/03                              |                        |          |  |                        |  |
|             |                | enrg       | M. MOSTOLLER | 01/13/03                              |                        |          |  |                        |  |
|             |                | chr        | M. MOSTOLLER | 01/13/03                              |                        |          |  |                        |  |
|             |                | appd       | M. MOSTOLLER | 01/13/03                              |                        |          |  |                        |  |
| sheet index | revision sheet |            |              |                                       |                        |          |  |                        |  |

cage code 22526

Pro/E

Tous droits strictement reserves. Reproduction ou communication a des tiers interdite sous quelque forme que ce soit sans autorisation écrite du propriétaire. Propriete de c FCI. Droits de reproduction FCI.



All rights strictly reserved. Reproduction or issue to third parties in any form whatsoever is not permitted without written authority from the proprietor. Property of FCI. Copyright FCI.

|                |
|----------------|
| PRODUCT NUMBER |
| 51939-038__    |
| NOTE: 3        |

NOTES:

1. DIMENSIONS AND TOLERANCES ARE IN ACCORDANCE WITH ASME Y14.5M, 1994 UNLESS OTHERWISE SPECIFIED.

CONNECTOR NOTES:

- 2. HOUSING MATERIAL: UL 94 V-0 GLASS FILLED HIGH-TEMP THERMOPLASTIC  
POWER CONTACT MATERIAL: COPPER ALLOY  
SIGNAL PIN MATERIAL: COPPER ALLOY

3. SEE ITEM 1 & 2 IN PRINT 10064183 FOR PLATING SPEC OF 51939-038 AND 51939-038LF RESPECTIVELY.

- 4. MANUFACTURER'S NAME, P/N, AND DATE CODE TO APPEAR ON THIS SURFACE.

5. PRODUCT SPECIFICATION GS-12-149.  
APPLICATION SPECIFICATION BUS-20-067.

6. PACKAGED IN TRAYS.

PCB NOTES:

7. ALL HOLE DIAMETERS ARE FINISHED HOLE SIZE.

- 8. MOUNTING HOLES, WHERE APPLICABLE, ARE UNPLATED.

- 9.  $\varnothing .0453 \pm .0010$  [1.151  $\pm$  0.025] DRILLED HOLES PLATED WITH  
.0003 [0.008] MIN SnPb OVER .001 [0.03]  
TO .003 [0.08] Cu PLATING TO ACHIEVE  
 $\varnothing .040 \pm .003$  [1.02  $\pm$  .07] HOLE.

- 10. "DIM XXX" TO BE DETERMINED BY THE CUSTOMER.

- 11. CONNECTOR KEEP-OUT ZONE.

12.  $\Delta$  SYMBOL WILL BE NEXT TO ANY DIMENSION, VIEW, OR NOTE WHICH HAS BEEN MODIFIED WITH THE CURRENT DRAWING REVISION.

|             |                |            |      |                                       |                       |          |  |             |  |                           |  |
|-------------|----------------|------------|------|---------------------------------------|-----------------------|----------|--|-------------|--|---------------------------|--|
| mat'l code  |                | SEE NOTE 2 |      | tolerances unless otherwise specified |                       | CUSTOMER |  |             |  | www.fciconnect.com        |  |
| ltr         | ecn no.        | dr         | date | linear                                | .XX±.01/0.X±0.3       | COPY     |  | projection  |  | title                     |  |
| C           |                |            |      |                                       | .XXX±.005/0.XX±0.13   |          |  |             |  | 4P + 24S + 2P             |  |
|             |                |            |      | angles                                | .XXX±.002/0.XXX±0.051 |          |  |             |  | RIGHT ANGLE SOLDER HEADER |  |
|             |                |            |      |                                       | 0°±2°                 |          |  |             |  | product family            |  |
|             |                |            |      | dr                                    | T. BRUNGARD 01/13/03  | INCH/MM  |  | PwrBlade    |  | code                      |  |
|             |                |            |      | engr                                  | M. MOSTOLLER 01/13/03 | scale    |  | size        |  | 213                       |  |
|             |                |            |      | chr                                   | M. MOSTOLLER 01/13/03 | 1:1      |  | dwg no      |  | sheet                     |  |
|             |                |            |      | appd                                  | M. MOSTOLLER 01/13/03 |          |  | A 51939-038 |  | 4 of 4                    |  |
| sheet index | revision sheet |            |      |                                       |                       |          |  |             |  |                           |  |

cage code 22526