

PCN# 2015-12-01-CS-2 Issue Date: 01Dec2015

Product Change Notification

(Add subject of change here: e.g. "Color change in strain relief boot")

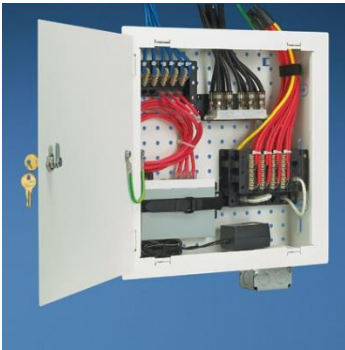
Product Group: CS - Copper Outlets, Surface Raceway

Distribution: Please advise if Global or theater specific (e.g. NA, EMEA, AP or combination)

Related ECN#(s)

Description of Change: (Add photos/drawing required where applicable)

Discontinue Media Distribution System



Enclosures, hubs and accessories

Reason for Change: Market too competitive, too many brands.

Expected Influence on Quality/Reliability/Performance:
None

Available Replacement/Alternatives:
None

Part Numbers/ Series/Families Affected:

Enclosures: Description

MS14B	14" base
MS24B	24" base
MSB14E	14" base with screw down flat cover
MSB24E	24" base with screw down flat cover
MS14HD	14" hinged door with frame, lock and key
MS24HD	24" hinged door with frame, lock and key
MS14BHD	14" frameless hinged door with slam latch
MS24BHD	24" frameless hinged door with slam latch

Hubs: Description

MS8PD	Phone Distribution hub, with test ports and security interface.
MS8PE	Phone Expansion hub, expands to an additional eight locations
MS5E6PP	Cat 5e data hub, 6 ports
MS66PP	Cat 6 data hub, 6 ports
NKM8PD	NetKey Media Distribution Phone Hub
NKM8PE	NetKey Media Expansion Phone Hub
NKM5E6PP	NetKey Cat 5e data hub, 6 ports
MS4S1G	1x4 passive video splitter with 1 GHz performance
MS8S1G	1x8 passive video splitter with 1 GHz performance
MS4S2G	1x4 passive video splitter with 2 GHz performance
MS8S2G	1x8 passive video splitter with 2 GHz performance

Panels:

NKM8PP	8 port modular patch panel for NetKey connectivity
MS8PP	8 port modular patch panel for Mini Com connectivity

Accessories:

MSEBRKT	Equipment bracket
MSCM-KIT	Cable management kit
MSGRD-KIT	Grounding kit
MSCLK	Lock for frameless hinged door
MSCMR	Cable management D-ringMDU boxes, Hubs and accessories

PANDUIT

building a smarter,
unified business foundation
Connect. Manage. Automate.

Schedule for Change	Year (YYYY)	Month (MM)	Day (DD)
New product sample availability date			
Old product discontinuation date*	2016	06	30

*Note: After old product discontinuation date, the affected part numbers listed above will continue to be available for sale as long as supplies last. Product may be returned up to 60 days after the product discontinuation date.