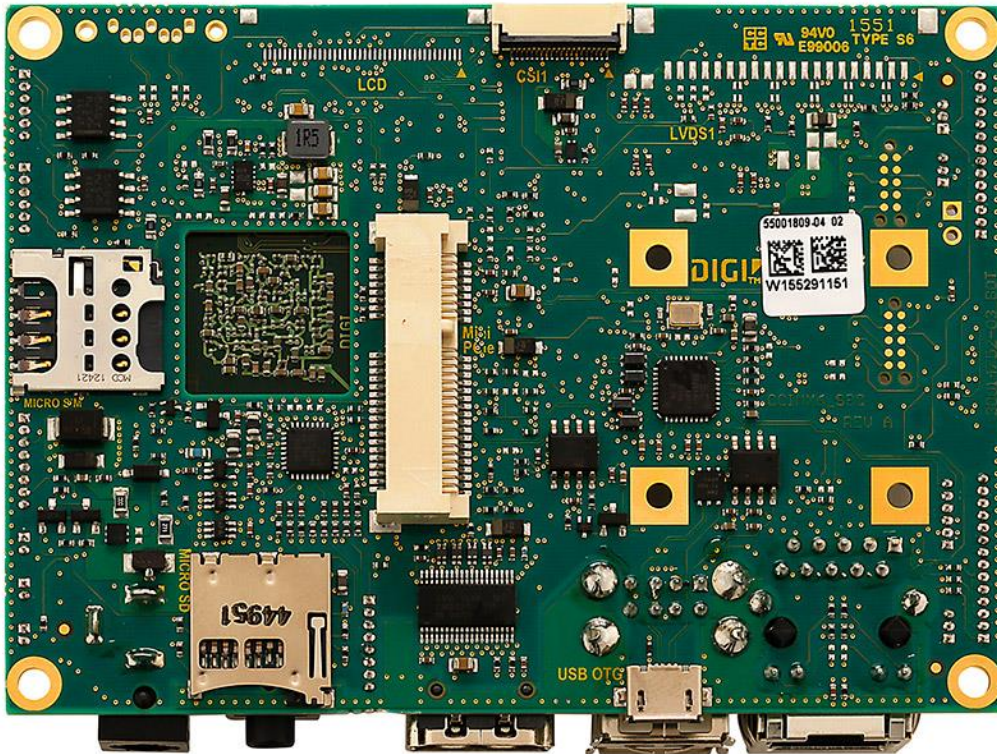
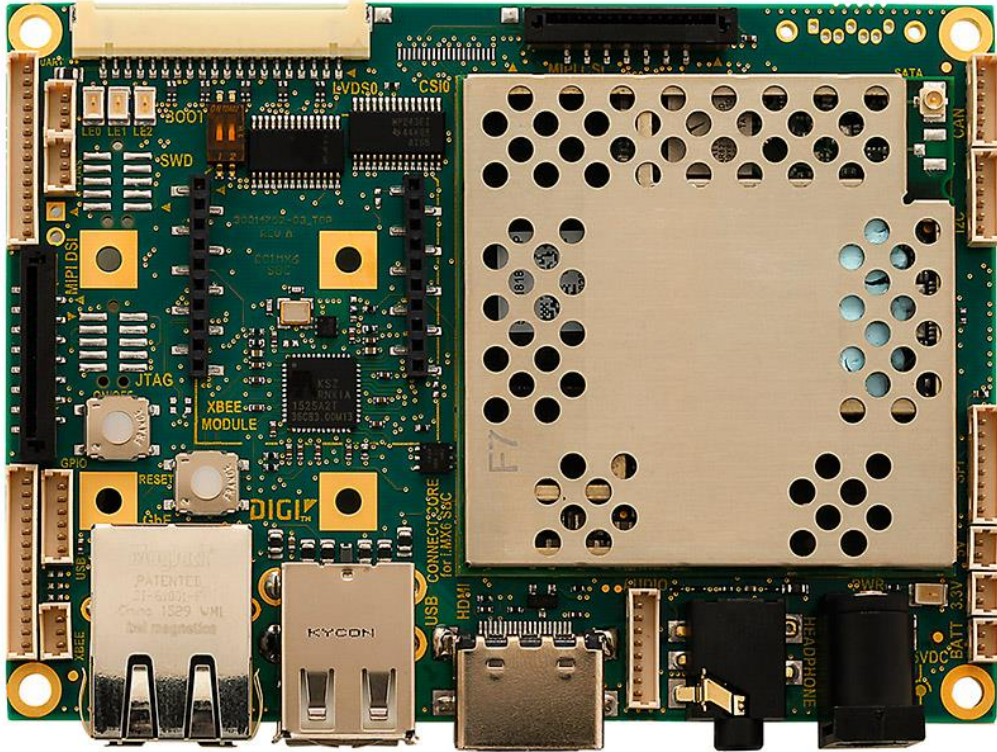




**ConnectCore 6 SBC, i.MX6Dual,  
Industrial, 800 MHz, -40° C to 85° C,  
4 GB flash, 1 GB DDR3,  
802.11a/b/g/n, Bluetooth 4.0,  
Ethernet**

PART NUMBER: CC-SB-WMX-L87C



<https://www.digi.com/products/models/cc-sb-wmx-l87c> 5-9-18