

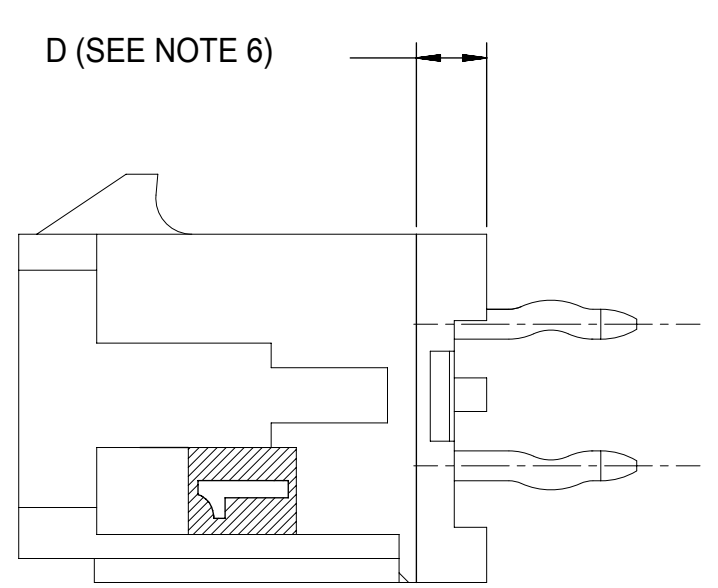
PCB LAYOUT: COMPONENT SIDE
RECOMMEND PCB THICKNESS: .062/1.57

NOTE : THIS ASSEMBLY DOES NOT HAVE POLARIZING PEGS.
CHECK ASSEMBLY FOR PROPER ORIENTATION TO THE PCB
PRIOR TO THE SOLDER PROCESS.

| CKTS | A | B |
|------|----------------|----------------|
| 02 | .262 6.65 | NA |
| 04 | .380 9.65 | .118 3.00 |
| 06 | .498 12.65 | .236 6.00 |
| 08 | .616 15.65 | .354 9.00 |
| 10 | .734 18.65 | .472 12.00 |
| 12 | .852 21.65 | .591 15.00 |
| 14 | .970 24.65 | .709 18.00 |
| 16 | 1.088 27.65 | .827 21.00 |
| 18 | 1.206 30.65 | .945 24.00 |
| 20 | 1.325 33.65 | 1.063 27.00 |
| 22 | 1.443 36.65 | 1.181 30.00 |
| 24 | 1.561 39.65 | 1.299 33.00 |

CIRCUIT "1" IDENTIFIED ON THIS SURFACE
(APPROX. LOCATION SHOWN FOR REF.)

| | FINISH A | FINISH B | FINISH C |
|------|--------------|--------------|--------------|
| CKTS | MATERIAL NO: | MATERIAL NO: | MATERIAL NO: |
| 02 | --- | --- | --- |
| 04 | --- | --- | --- |
| 06 | --- | --- | --- |
| 08 | 43045-0895 | --- | --- |
| 10 | --- | --- | --- |
| 12 | 43045-1295 | --- | --- |
| 14 | --- | --- | --- |
| 16 | --- | --- | --- |
| 18 | --- | --- | --- |
| 20 | --- | --- | --- |
| 22 | --- | --- | --- |
| 24 | --- | --- | --- |



NOTES:

- HOUSING MATERIAL: GLASS FILLED LIQUID CRYSTAL POLYMER, UL94V-0, COLOR: BLACK
TERMINAL MATERIAL: BRASS ALLOY
- FINISH: A = .000060/(0.00152) MIN. REFLOWED MATTE TIN OVER .000050/(0.00127) MIN. NICKEL PLATE. (FINISH IS BRIGHT IN APPEARANCE, THICKNESS AS APPLIED PRIOR TO REFLOW)
B = .000015/(0.00038) MIN. SELECT GOLD IN CONTACT AREA; .000100/(0.00254) MIN. SELECT MATTE TIN ON SOLDER TAILS; BOTH OVER .000050/(0.00127) MIN. NICKEL PLATE.
C = .000030/(0.00076) MIN. SELECT GOLD IN CONTACT AREA; .000100/(0.00254) MIN. SELECT MATTE TIN ON SOLDER TAILS; BOTH OVER .000050/(0.00127) MIN. NICKEL PLATE.
- PRODUCT SPECIFICATION: PS-43045
- TRAY PACKAGED : SEE MOLEX DRAWING PK-70873-0314
- MATES WITH MICRO FIT (3.0) RECEPTACLE SERIES 43025.
- CIRCUIT SIZES 2-6: "D" IS 0.265/6.74 FOR .010/0.25 STEP. CIRCUIT SIZES 8-24: "D" IS 0.063/1.60 FOR .010/0.25 STEP.
- THIS PART CONFORMS TO CLASS B REQUIREMENTS OF COSMETIC SPECIFICATION PS-45499-002.
- TEXT ON PART IS FOR REFERENCE ONLY. TEXT AND TEXT LOCATION MAY VARY DEPENDING ON PART NUMBER AND/OR TOOL.

| | | | |
|---------|--|---|----------------------------------|
| SYMBOLS | | THIS DRAWING CONTAINS INFORMATION THAT IS PROPRIETARY TO MOLEX ELECTRONIC TECHNOLOGIES, LLC AND SHOULD NOT BE USED WITHOUT WRITTEN PERMISSION | |
| ▽ = 0 | IN/MM | SCALE | CURRENT REV DESC: ADD 43045-1295 |
| ▽ = 0 | NTS | GENERAL TOLERANCES (UNLESS SPECIFIED) | |
| ▽ = 0 | 4 PLACES ± | MM | INCH |
| ▽ = 0 | 3 PLACES ± | ± 0.01 | |
| ▽ = 0 | 2 PLACES ± | ± 0.25 | ± 0.014 |
| ▽ = 0 | 1 PLACE ± | ± 0.36 | ± |
| ▽ = 0 | 0 PLACES ± | ± | ± |
| ▽ = 0 | ANGULAR TOL | ± 0.5 ° | |
| ▽ = 0 | DRAFT WHERE APPLICABLE MUST REMAIN WITHIN DIMENSIONS | THIRD ANGLE PROJECTION | DRAWING SERIES |
| | | C-SIZE | 43045 |
| | | EC NO: 617602 | DRWN: JEHRISMAN 2019/05/20 |
| | | CHK'D: SSOUSEK | 2019/05/21 |
| | | APPR: FSMITH | 2019/05/22 |
| | | INITIAL REVISION: | |
| | | DRWN: MMSTROH | 2012/03/23 |
| | | APPR: FSMITH | 2012/04/15 |
| | | DOCUMENT NUMBER | DOC TYPE DOC PART REVISION |
| | | SD-43045-036 | PSD 001 A2 |
| | | MATERIAL NUMBER | CUSTOMER |
| | | SEE TABLE | GENERAL MARKET |
| | | | SHEET NUMBER |
| | | | 1 OF 1 |