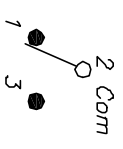


RECOMMENDED PCB LAYOUT
SCALE 2:1

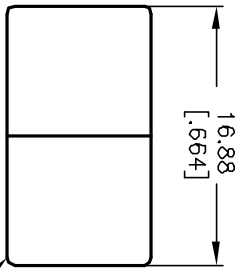


CIRCUIT: SPST

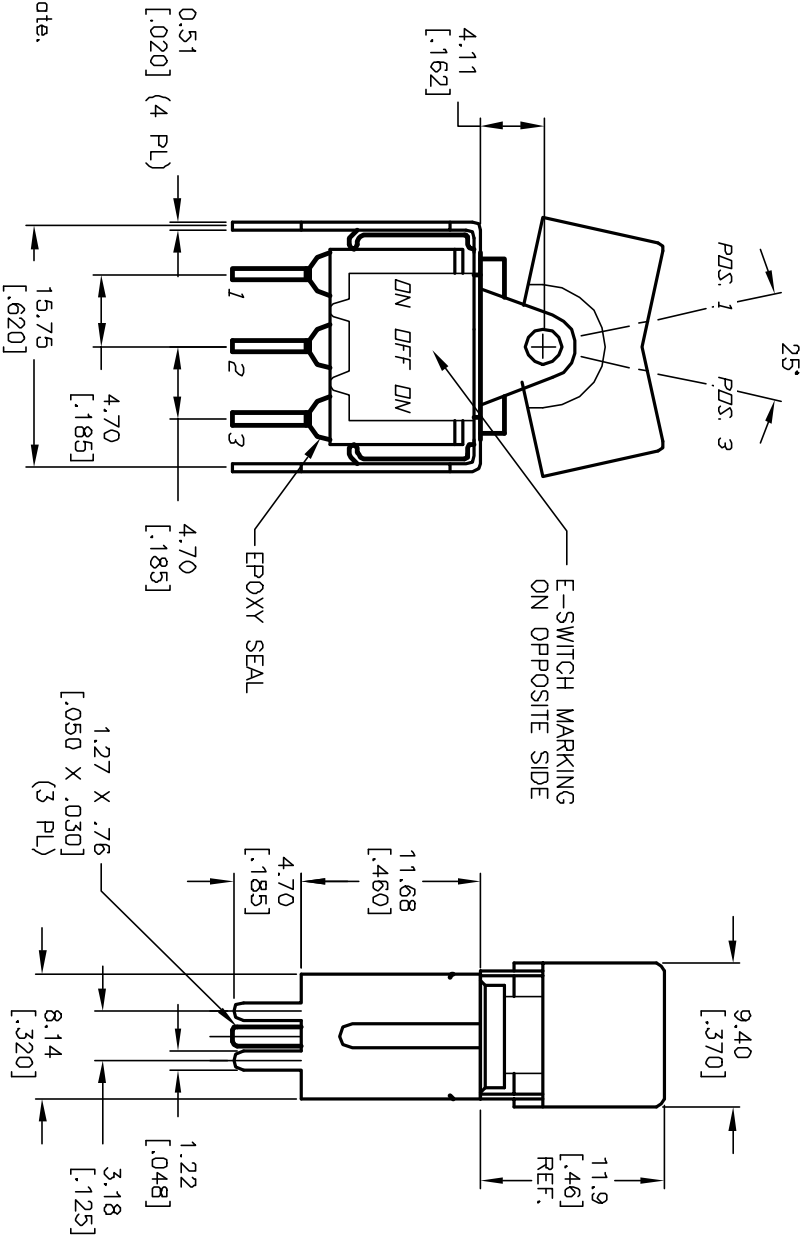
SWITCH FUNCTION		
PDS. 1	PDS. 2	PDS. 3
(DN)	(OFF)	(DN)
2-3	OPEN	2-1

() =Momentary

- NOTES:
1. ALL DIMENSIONS IN MM [INCH]
 2. GENERAL TOLERANCE: X.X=±0.4
X.XX=±0.25
 3. TERM. NOS. FOR REF. ONLY
 4. RATING: 0.4VA @20V max.
 5. MATERIAL: FIXED TERMINAL & MOVING CONTACT
Copper Alloy w/Gold Plate over Nickel CONTACT
 6. CONTACT RESISTANCE: 10mΩ Ohms max initial
@2-4VDC, 100ma for AG & AU
 7. ELECTRICAL LIFE: 50,000 make-and-break
cycles at full load.
 8. INSULATION RESISTANCE: 1,000M ohm min.
 9. DIELECTRIC STRENGTH: 1000V RMS @sea level
 10. OPERATING TEMP.: -30°C to 85°C



BLK ACTUATOR



REV.	ECN No.	DESCRIPTION	DATE	CHKD	SCALE	DATE	DR	DWG	REV
A	11603	RELEASED FOR PRODUCTION	8/7/01	CJB	2:1	8/7/01	CJB	T314016	A
TITLE					300 SP-4 J1 BLK VSS2 R E				
THE INFORMATION CONTAINED IN THIS DOCUMENT IS PROPRIETARY TO E-SWITCH AND IS NOT TO BE COPIED OR TRANSFERRED					E-SWITCH®				