

PART NUMBER	REV	TERMINATOR	FEED TYPE	DESCRIPTION
1528592-1	A	LEADMAKER	MECH POST FEED	CUTS CARRIER
1528592-2	A	BENCH	MECH PRE FEED	CUTS CARRIER
1528592-6	A	LEADMAKER	MECH POST FEED	CONTINUOUS CARRIER
7-1528592-1	A	LEADMAKER	MECH POST FEED	-1 AND SPARE PARTS
7-1528592-2	A	BENCH	MECH PRE FEED	-2 AND SPARE PARTS
7-1528592-6	A	LEADMAKER	MECH POST FEED	-6 AND SPARE PARTS
7-1528592-7	A	-	-	SPARE PARTS KIT

CRIMP	SIZE	TYPE	RANGE
WIRE	1.57 [1.062 IN]	F	0.22-0.35mm <sup>2</sup>
INSUL	2.54 [1.000 IN]	O	1.15-1.40 [1.045-.055 IN] $\Delta$

WIRE STRIP LENGTH	APPL INSTRUCTIONS
3.90-4.70 [1.54-.185 IN]	408-8322 & 408-8490 $\Delta$

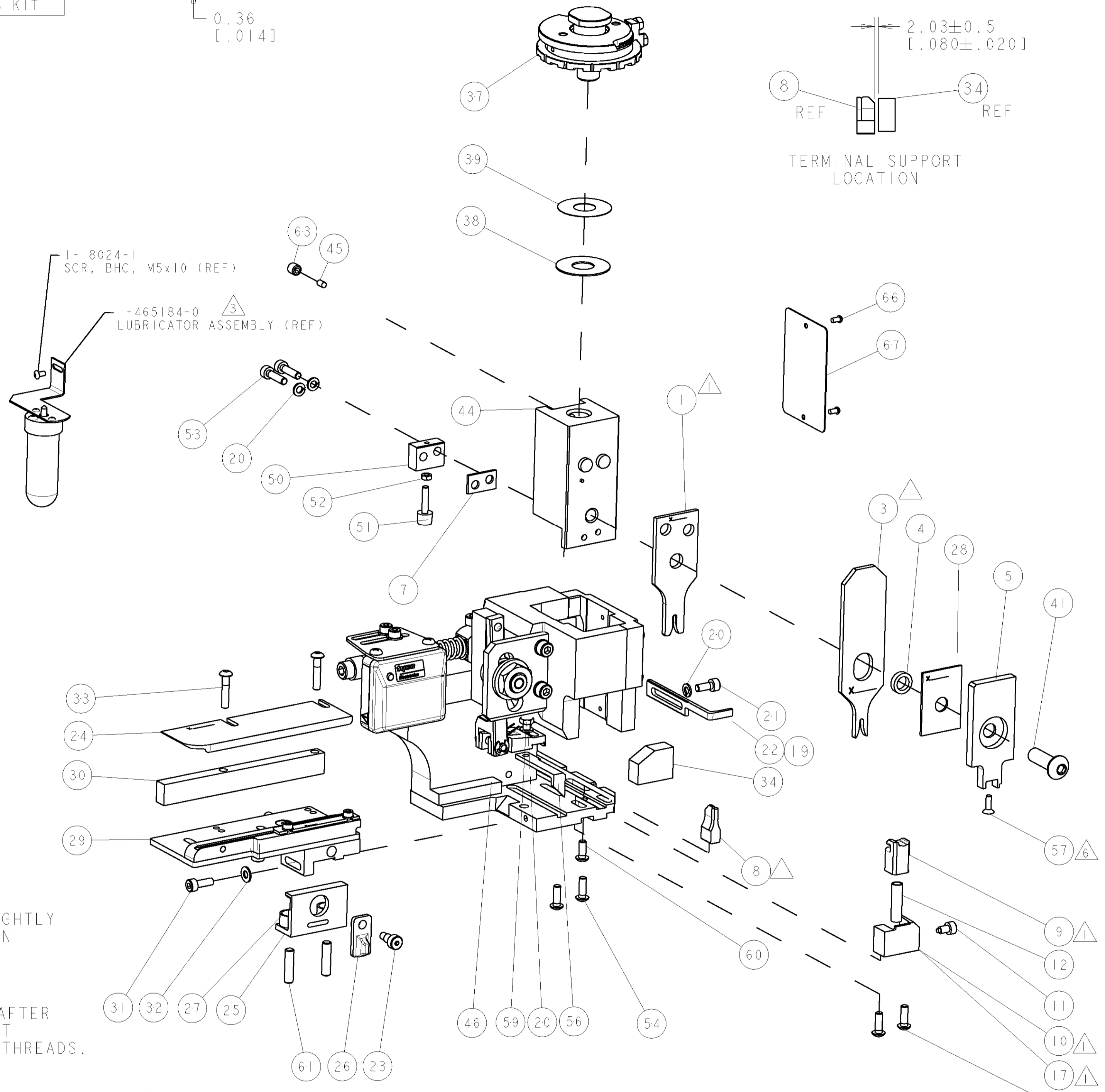
TERMINAL APPL SPEC	FEED
114-20121 $\Delta$	12.50 [4.92 IN]

PIN	SOCKET	SEAL
1437709-6	1437709-3	1-1437713-1
1-1437709-1	1437709-9	-
-	1-1437709-4	-

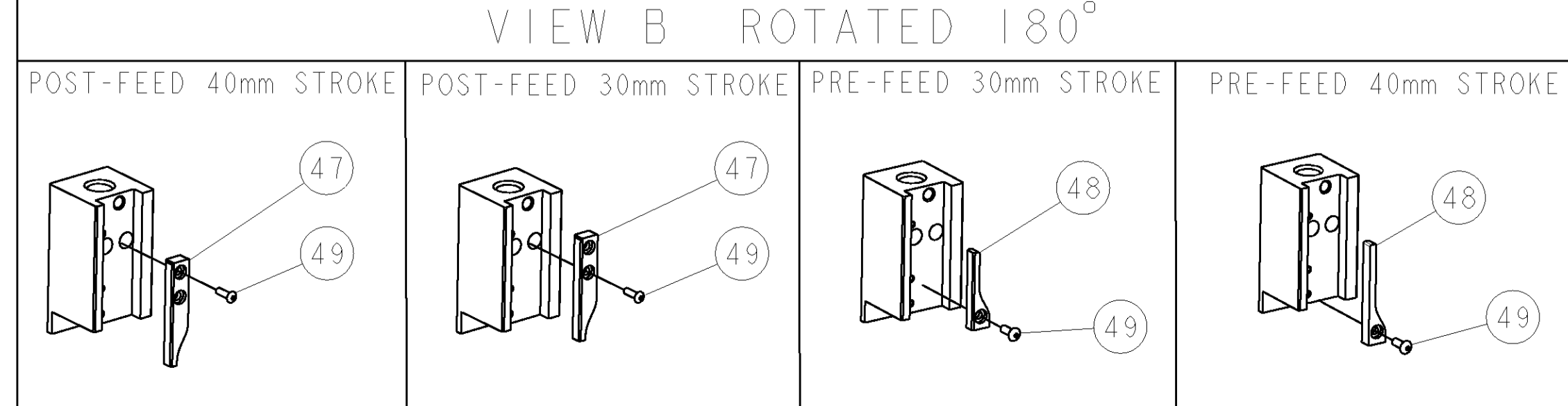
  

WIRE SIZE	CRIMP HEIGHT	REF SETTING
0.35 mm <sup>2</sup>	1.03 ± 0.03 [1.041 ± .001 IN]	B 9
0.30 mm <sup>2</sup>	1.00 ± 0.03 [1.039 ± .001 IN]	C 3
0.22 mm <sup>2</sup>	0.96 ± 0.03 [1.038 ± .001 IN]	C 6



- $\Delta$  RECOMMENDED SPARE PARTS
- 2. GREASE RAM, CAM, CAM FOLLOWER AND FEED ROD LIGHTLY
- 3. LUBRICATE DAILY PER THE APPLICATOR INSTRUCTION SHEET SUPPLIED WITH THE APPLICATOR
- $\Delta$  THIS APPLICATOR APPLIES TERMINAL WITH A SEAL.
- $\Delta$  APPLY TORQ-SEAL IN ALLEN SOCKET TO FILL HOLE AFTER FLAT HD HAS BEEN ADJUSTED TO CORRECT HEIGHT AT QUALIFICATION. APPLY #1-23419-5 LOC-TITE TO THREADS.
- $\Delta$  ACHIEVABLE TENSILE VALUE FOR 0.30mm<sup>2</sup> = 67N.  
ACHIEVABLE TENSILE VALUE FOR 0.22mm<sup>2</sup> = 49N.

**\* WARNING**  
ON INSTALLATION, SET WIRE DISC TO LARGEST WIRE SIZE SETTING. USE OF SETTINGS BELOW MIN. REQUIRED CRIMP HEIGHT SETTING WILL CAUSE DAMAGE TO CRIMP TOOLING.



-77	-76	-72	-71	-6	-2	-1	PART NO	DESCRIPTION	ITEM NO
-	-	-	-	-	-	-	-	-	83
-	-	-	-	-	-	-	-	-	82
-	-	-	-	-	-	-	-	-	81
-	-	-	-	-	-	-	-	-	80
-	-	-	-	-	-	-	-	-	79
-	-	-	-	-	-	-	-	-	78
-	-	-	-	-	-	-	-	-	77
-	-	-	-	-	-	-	-	-	76
-	-	-	-	-	-	-	-	-	75
-	-	-	-	-	-	-	-	-	74

SET UP GAGE 458637-3		LOC	DIST	REVISONS				DATE	DWN	APPR
P	LTR	A	66	DESCRIPTION	DATE	DWN	APPR			
A				SEE ECO-06-008044	05APR2006	LJL	MC			
-	-	-	-	-	-	-	-	-	73	
-	-	-	-	-	-	-	-	-	72	
-	-	-	-	-	-	-	-	-	71	
-	-	-	-	-	-	-	-	-	70	
-	-	-	-	-	-	-	-	-	69	
-	-	-	-	-	-	-	-	-	68	
-	-	-	-	-	-	-	-	-	67	
-	-	-	-	-	-	-	-	-	66	
-	-	-	-	-	-	-	-	-	65	
-	-	-	-	-	-	-	-	-	64	
-	-	-	-	-	-	-	-	-	63	
-	-	-	-	-	-	-	-	-	62	
-	-	-	-	-	-	-	-	-	61	
-	-	-	-	-	-	-	-	-	60	
-	-	-	-	-	-	-	-	-	59	
-	-	-	-	-	-	-	-	-	58	
-	-	-	-	-	-	-	-	-	57	
-	-	-	-	-	-	-	-	-	56	
-	-	-	-	-	-	-	-	-	55	
-	-	-	-	-	-	-	-	-	54	
-	-	-	-	-	-	-	-	-	53	
-	-	-	-	-	-	-	-	-	52	
-	-	-	-	-	-	-	-	-	51	
-	-	-	-	-	-	-	-	-	50	
-	-	-	-	-	-	-	-	-	49	
-	-	-	-	-	-	-	-	-	48	
-	-	-	-	-	-	-	-	-	47	
-	-	-	-	-	-	-	-	-	46	
-	-	-	-	-	-	-	-	-	45	
-	-	-	-	-	-	-	-	-	44	
-	-	-	-	-	-	-	-	-	43	
-	-	-	-	-	-	-	-	-	42	
-	-	-	-	-	-	-	-	-	41	
-	-	-	-	-	-	-	-	-	40	
-	-	-	-	-	-	-	-	-	39	
-	-	-	-	-	-	-	-	-	38	
-	-	-	-	-	-	-	-	-	37	
-	-	-	-	-	-	-	-	-	36	
-	-	-	-	-	-	-	-	-	35	
-	-	-	-	-	-	-	-	-	34	
-	-	-	-	-	-	-	-	-	33	
-	-	-	-	-	-	-	-	-	32	
-	-	-	-	-	-	-	-	-	31	
-	-	-	-	-	-	-	-	-	30	
-	-	-	-	-	-	-	-	-	29	
-	-	-	-	-	-	-	-	-	28	
-	-	-	-	-	-	-	-	-	27	
-	-	-	-	-	-	-	-	-	26	
-	-	-	-	-	-	-	-	-	25	
-	-	-	-	-	-	-	-	-	24	
-	-	-	-	-	-	-	-	-	23	
-	-	-	-	-	-	-	-	-	22	
-	-	-	-	-	-	-	-	-	21	
-	-	-	-	-	-	-	-	-	20	
-	-	-	-	-	-	-	-	-	19	
-	-	-	-	-	-	-	-	-	18	
-	-	-	-	-	-	-	-	-	17	
-	-	-	-	-	-	-	-	-	16	
-	-	-	-	-	-	-	-	-	15	
-	-	-	-	-	-	-	-	-	14	
-	-	-	-	-	-	-	-	-	13	
-	-	-	-	-	-	-	-	-	12	
-	-	-	-	-	-	-	-	-	11	
-	-	-	-	-	-	-	-	-	10	
-	-	-	-	-	-	-	-	-	9	
-	-	-	-	-	-	-	-	-	8	
-	-	-	-	-	-	-	-	-	7	
-	-	-	-	-	-	-	-	-	6	
-	-	-	-	-	-	-	-	-	5	
-	-	-	-	-	-	-	-	-	4	
-	-	-	-	-	-	-	-	-	3	
-	-	-	-	-	-	-	-	-	2	
-	-	-	-	-	-	-	-	-	1	
-77	-76	-72	-71	-6	-2	-1	PART NO	DESCRIPTION	ITEM NO	
DIMENSIONS:		TOLERANCES UNLESS OTHERWISE SPECIFIED:		DWN		DATE		APPR		
mm [IN]		0 PLC ±		M. CLIFFORD		05-Apr-06		TYCO		
1 PLC ±		1 PLC ±		NAME		DATE		Tyco Electronics		
2 PLC ±		2 PLC ±		M. CLIFFORD		05-Apr-06		Harrisburg, PA 17105-3608		
3 PLC ±		3 PLC ±		PRODUCT SPEC		-		FINE ADJUST SIDE FEED HDI APPLICATOR		
4 PLC ±		4 PLC ±		APPLICATION SPEC		-		-		
ANGLES ±		ANGLES ±		See Table		-		-		
MATERIAL		FINISH		WEIGHT		SIZE		RESTRICTED TO		
-		-		-		A   00779		-		
-		-		-		C=1528592		-		
-		-		-		SCALE		SHEET		
-		-		-		3:5		1 OF 1		
-		-		-		REV		A		