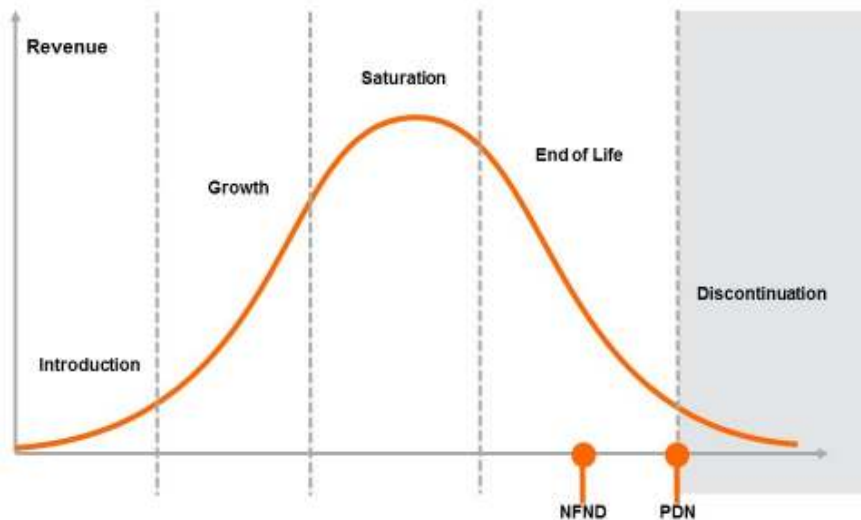


Light is OSRAM

Product Or Individual Q-Code Discontinuation (acc. JEDEC J-STD-048)
OS-PDN-2019-007

15-Mar-2019

Last order: 15-Sept-2019
Last delivery: 15-Mar-2020



Please direct your feedback to your local Sales office.

DISCONTINUED				NEW (REPLACEMENT)		
Device	Ordering Code	Brand	Reason for discontinuation	Device	Datasheet Ordering Code	Brand
LW G6SP-DBEB-5H6J-0-140-R18-Z-HE	Q65110A7825	Advanced Power TOPLED	Phase-out of CTR Binning	LW G6SP-EAFA-JKQL-1-140-R18-Z	Q65110A9043	Advanced Power TOPLED
LA E65F-S2U1-1-2A2B+DW-24-3A4B-A-R33-XX	Q65110A7988	Power TOPLED	No sufficient future volume forecast	LA E65F-T2V2-1-2A2B+DBFA-24-3A4B-A-R33-Z	Q65112A4802	Power TOPLED
LW G6CP-EBFA-MNK-56-140-R33-Z-HAN	Q65110A9591	Advanced Power TOPLED	Too high voltage groups	LW G6CP-EAFA-JKQL-1-140-R18-Z	Q65110A8947	Advanced Power TOPLED
LUW H9GP.CE-KZLX-HM-8F8G-350-R18-Z	Q65111A1882	OSLON	Too high voltage groups	LUW H9GP.CE-KYLY-EMKM-1-350-R18-Z	Q65111A1881	OSLON
LW G6CP-EA-NKOK-1-140-R18-Z-AL	Q65111A1985	Advanced Power TOPLED	Brightness increase – dim selections need to be phased-out	LW G6CP-EAEB-NKOK-1-140-R18-Z-AL	Q65111A1984	Advanced Power TOPLED
LS P47F-U1V1-1-3A4B-30-R18-Z	Q65111A4613	PointLED	Brightness increase – dim selections need to be phased-out	LS P47F-U2AA-1-3A5A-30-R18-Z	Q65112A3009	PointLED
LW TVSG.BB-AZBY-JC-1-20-R18-Z-PRE	Q65111A5886	TOPLED	Brightness increase – dim selections need to be phased-out	LW TVSG.BB-AZBZ-JC-1-20-R18-Z-PRE	Q65112A6976	TOPLED
LUW H9GP.CE-KZLX-IM-8F8G-350-R18-Z-HAN	Q65111A5995	OSLON	Too high voltage groups	LUW H9GP.CE-KYLY-EMKM-1-350-R18-Z	Q65111A1881	OSLON
LUW H9GP.CE-KZLX-HM-8F8G-350-R18-Z-HAN	Q65111A6062	OSLON	Too high voltage groups	LUW H9GP.CE-KYLY-EMKM-1-350-R18-Z	Q65111A1881	OSLON
LUW H9GP.CE-KZLX-JM-8F8G-350-R18-Z-HAN	Q65111A7990	OSLON	Too high voltage groups	LUW H9GP.CE-KYLY-EMKM-1-350-R18-Z	Q65111A1881	OSLON
LUW H9GP.CE-LXLY-HM-8F8G-350-R18-Z-HAN	Q65112A1763	OSLON	Too high voltage groups	LUW H9GP.CE-KYLY-EMKM-1-350-R18-Z	Q65111A1881	OSLON
LT M673-N1R2-25-1-10-R18-Z	Q65112A2700	Mini TOPLED	Identical Ordering Code available	LT M673-N1R2-25-1-10-R18-Z	Q65110A5930	Mini TOPLED